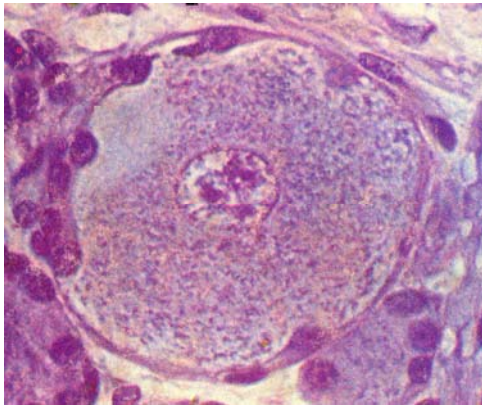
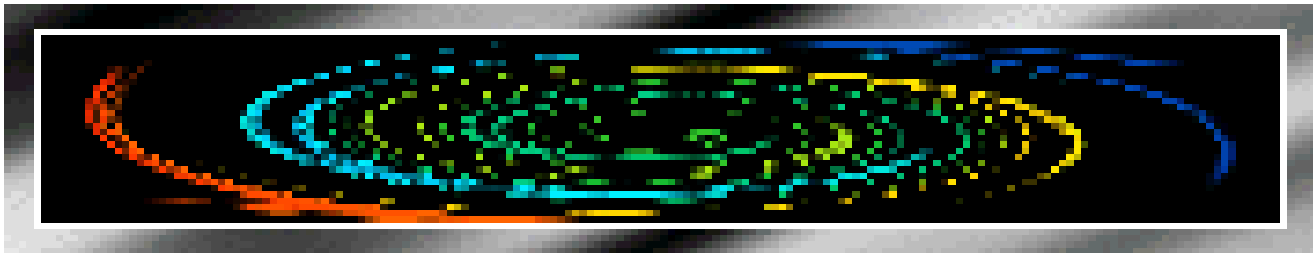


Histology and Embryology



- Chapter 1 Introduction and Cell**
- [Chapter 2 Epithelial tissue](#)**
- Chapter 3 Connective Tissue**
- Chapter 4 Blood**
- Chapter 5 Cartilage and Bone**
- Chapter 6 Muscle Tissue**
- Chapter 7 Nerve Tissue**
- Chapter 8 Circulatory System**
- Chapter 9 Immune System**
- Chapter 10 Skin**
- Chapter 11 Digestive Tract**
- Chapter 12 Digestive Gland**
- Chapter 13 Respiratory System**
- Chapter 14 Urinary System**
- Chapter 15 Endocrine System**
- Chapter 16 Sense Organ**
- Chapter 17 Male Reproduction**
- Chapter 18 Female Reproduction**
- Chapter 19 Embryology 1**
- Chapter 20 Embryology 2**

Chapter 3 Connective tissue proper

I Slides

II Sections

No.1 Loose connective tissue

No.2 Dense regular connective tissue

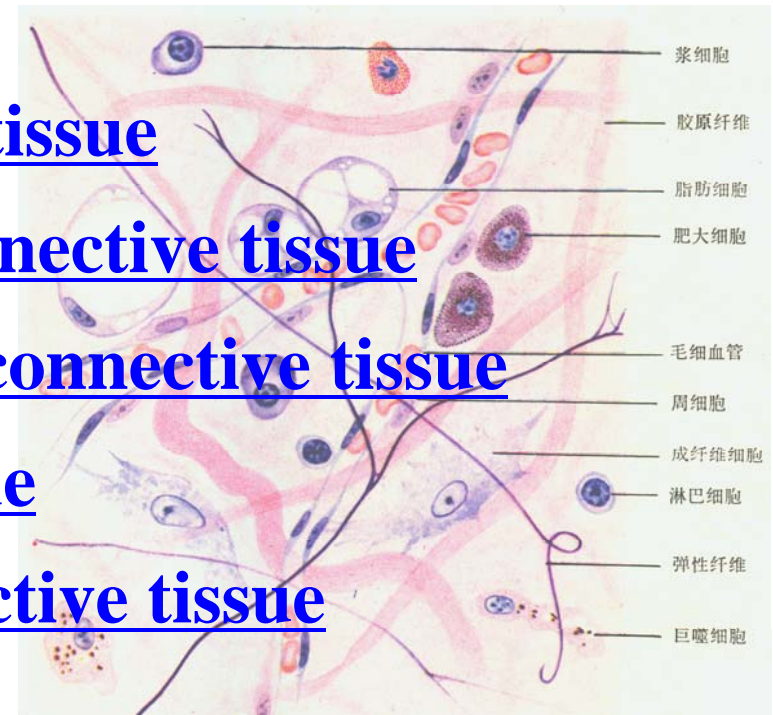
No.45 Dense irregular connective tissue

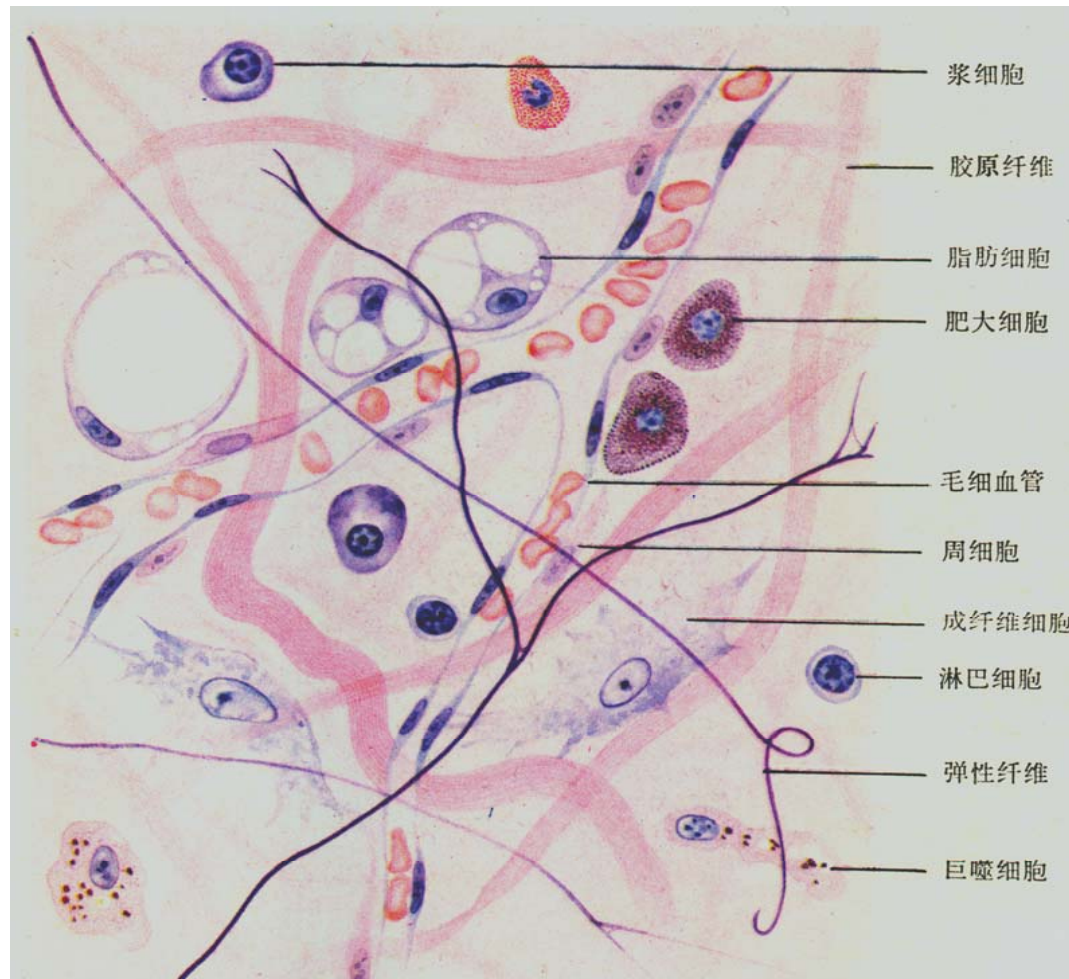
and adipose tissue

III Drawing: Loose connective tissue

IV EM photos: 11-16

V Summary





Loose connective tissue

Material :

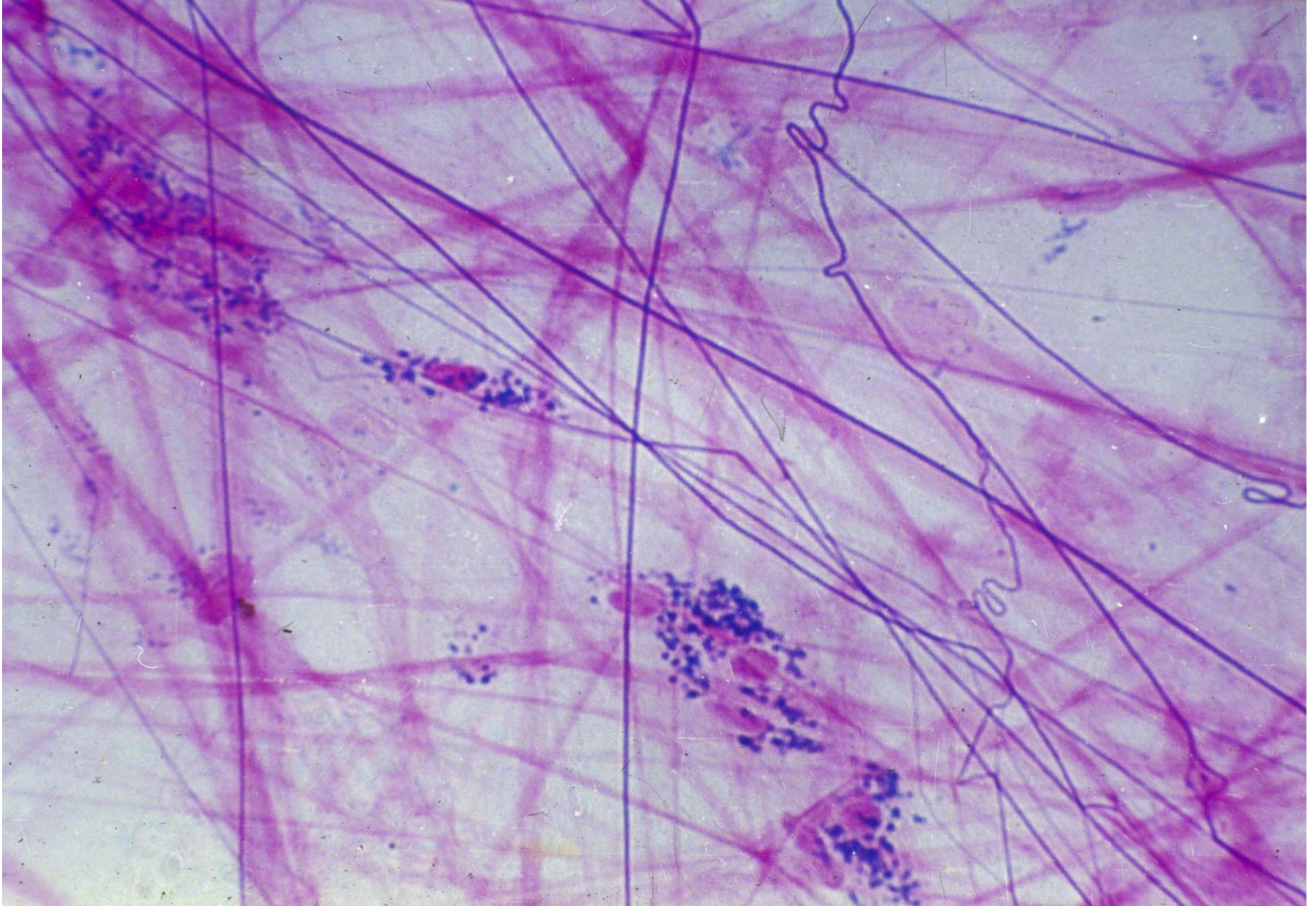
Staining :

Amplification :

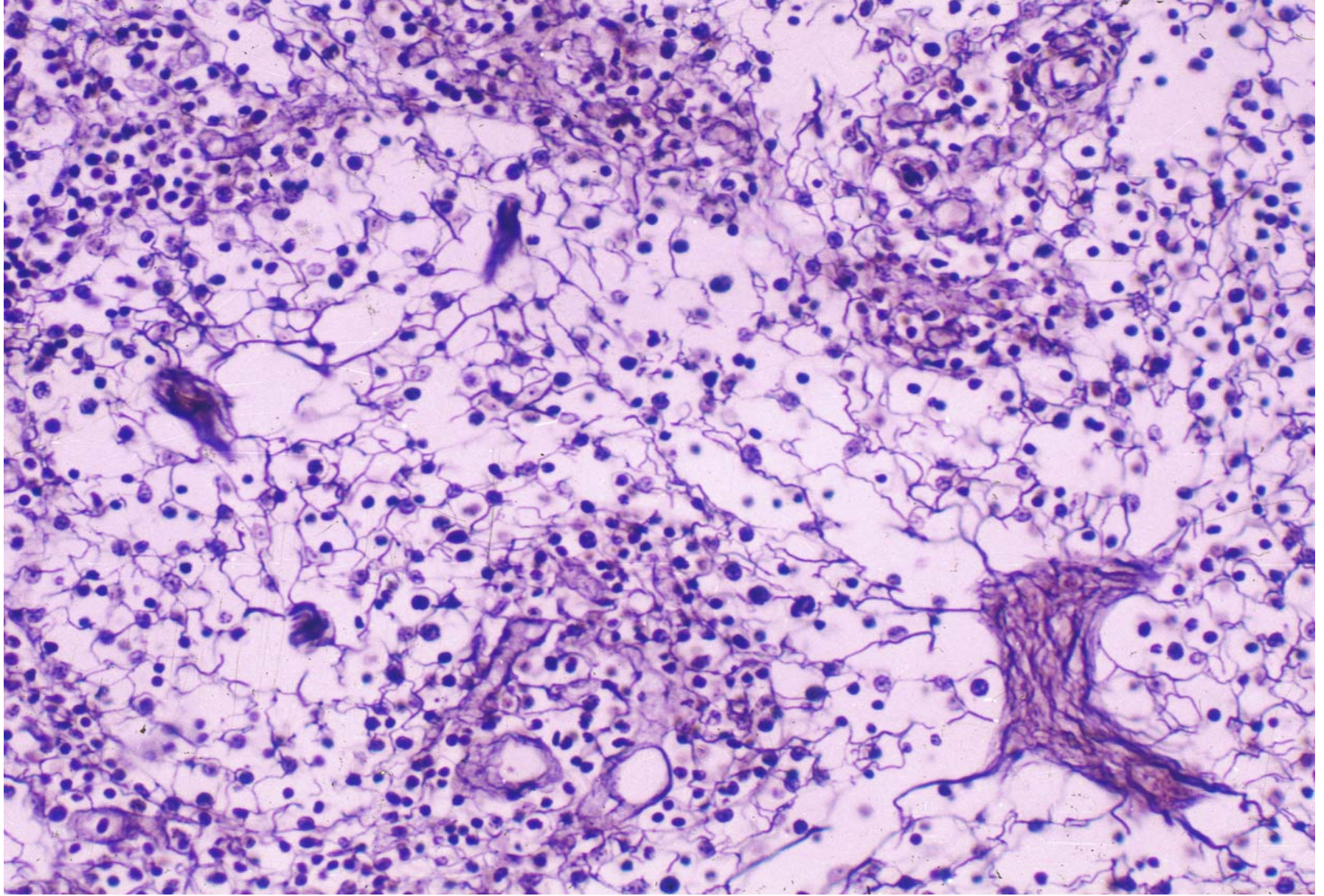
Date :

Summary

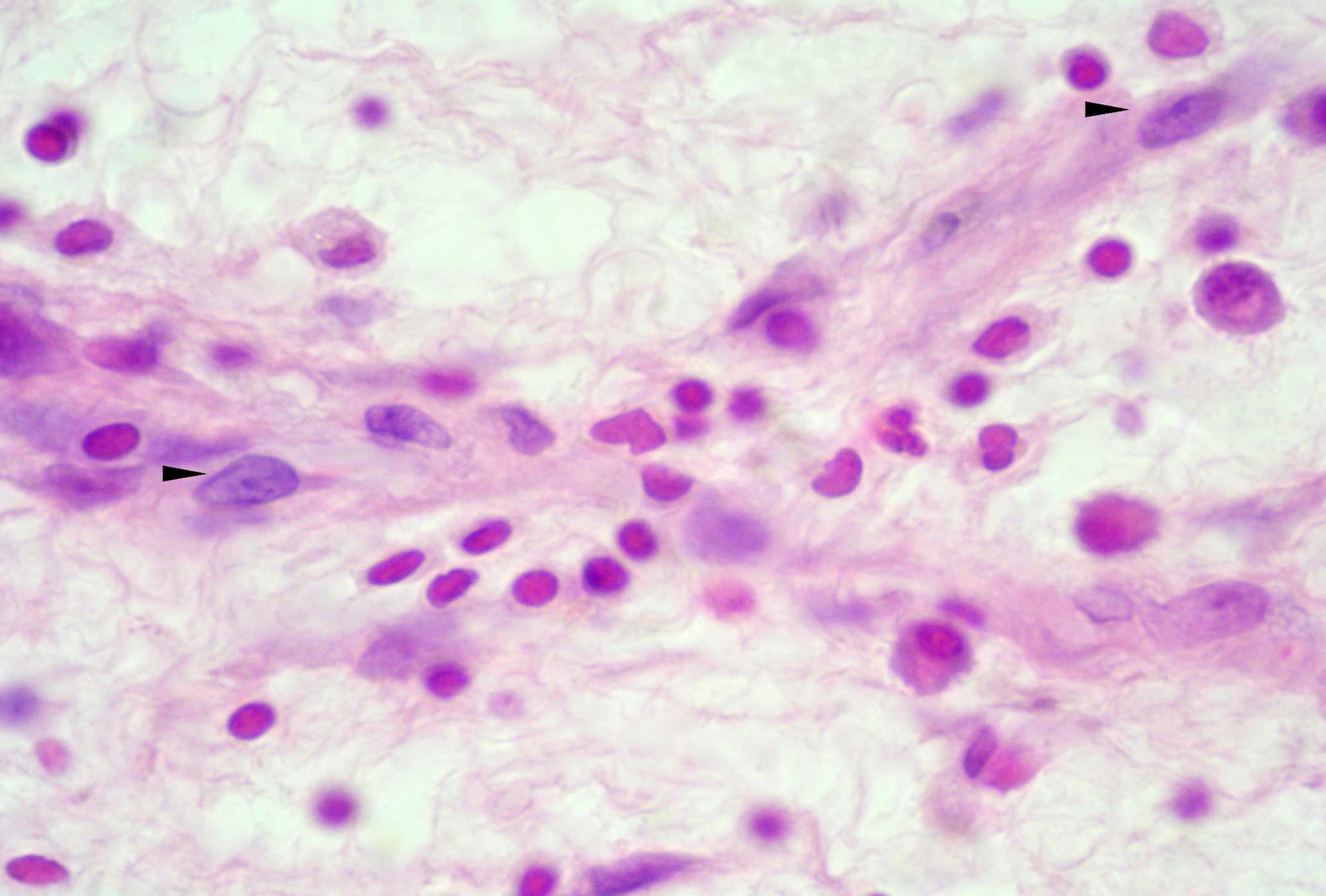
- **the typical structure and the functions of the fibers and cells in the loose connective tissue**
- **the difference between the dense regular connective tissue and dense irregular connective tissue**



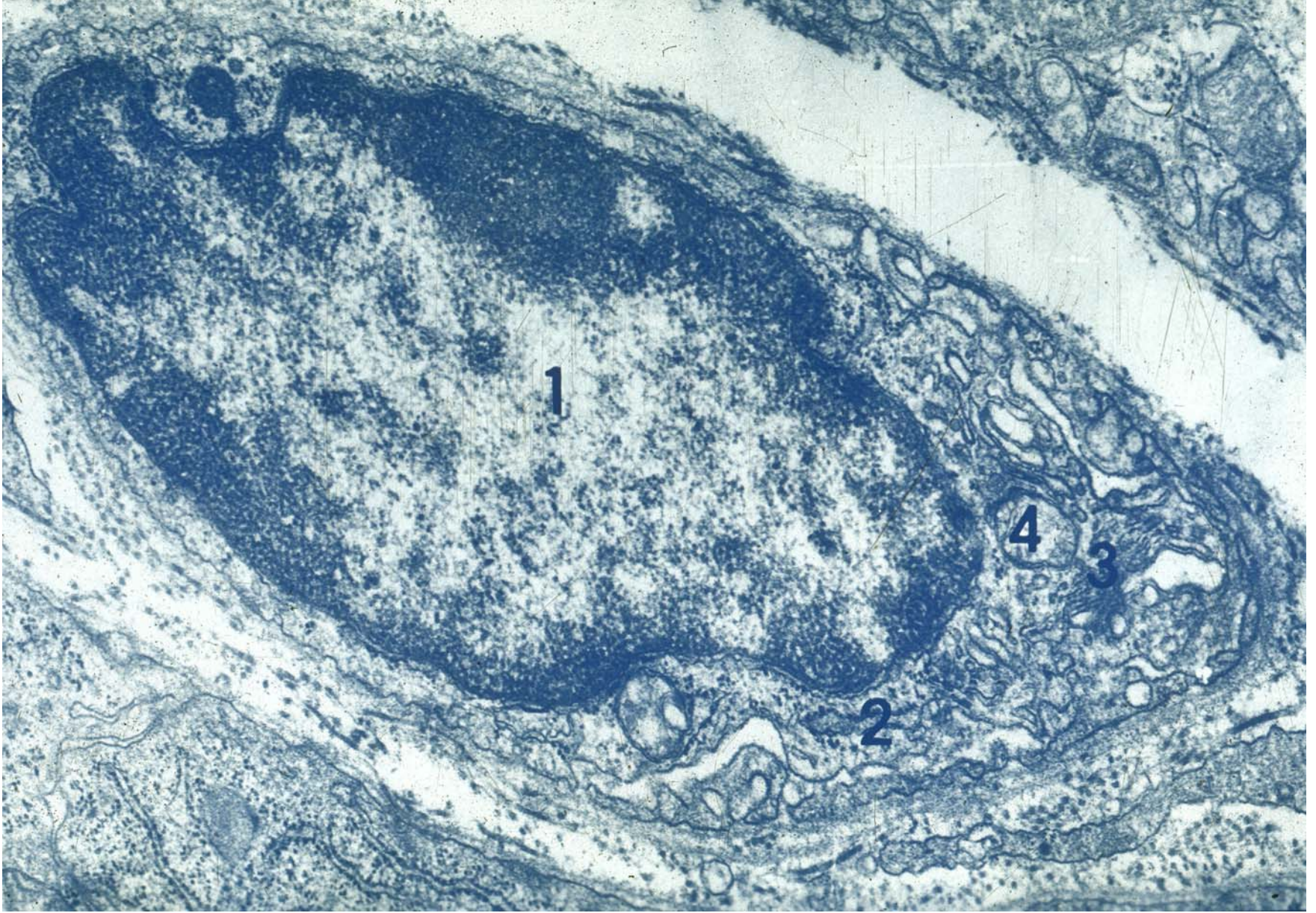
Loose connective tissue including collagen fibers, fibroblast, macrophage and elastic fiber



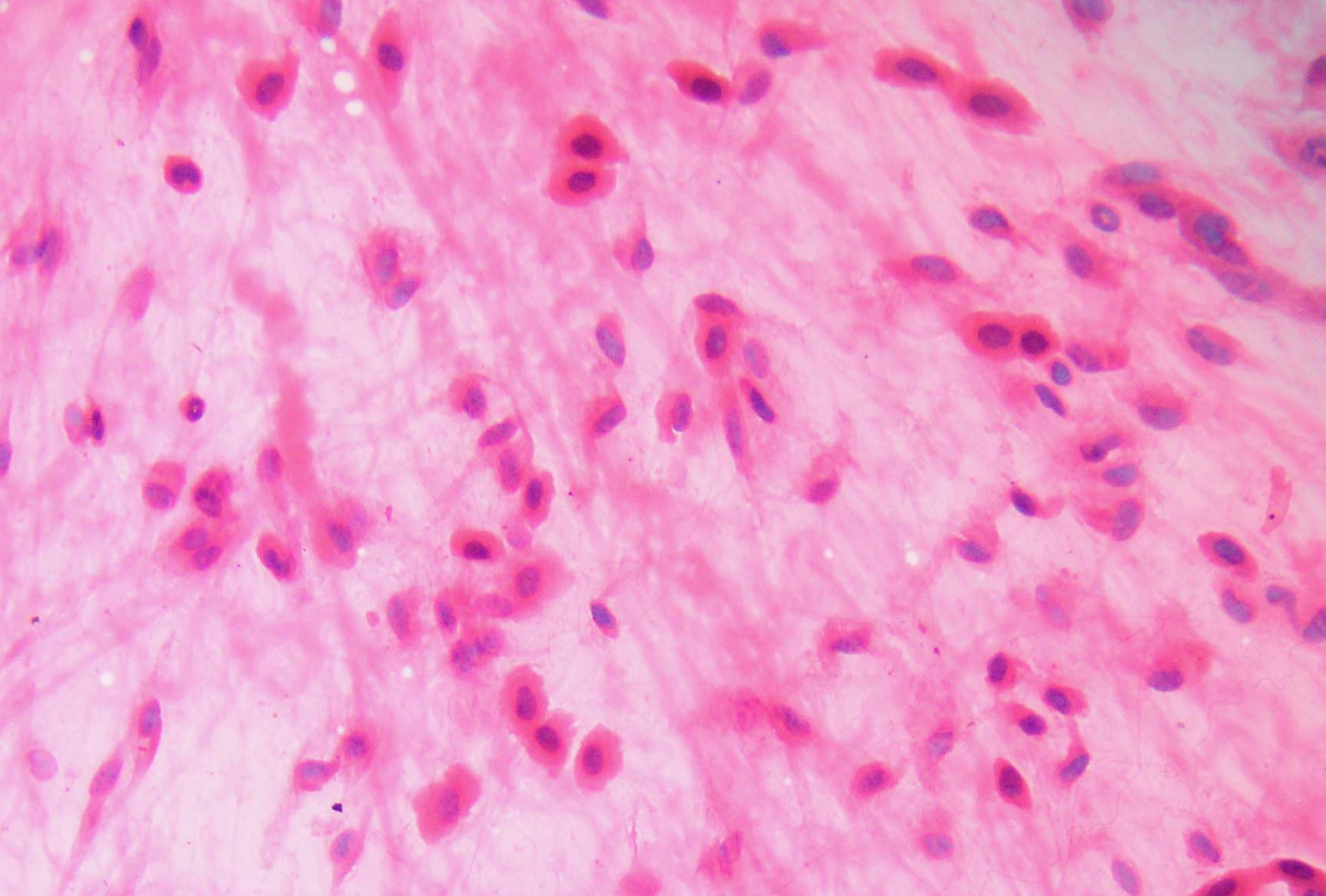
Reticular fiber



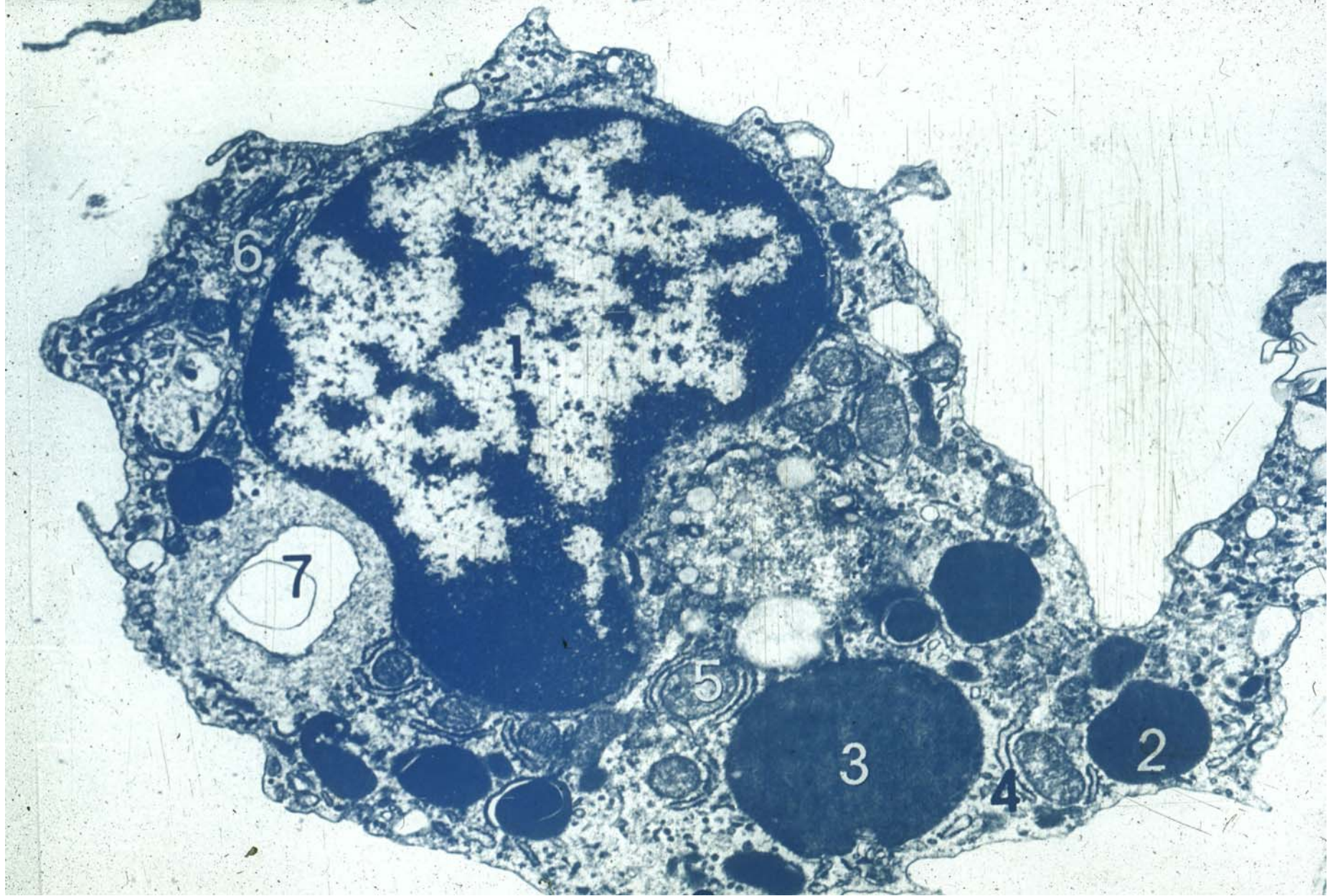
Fibroblast



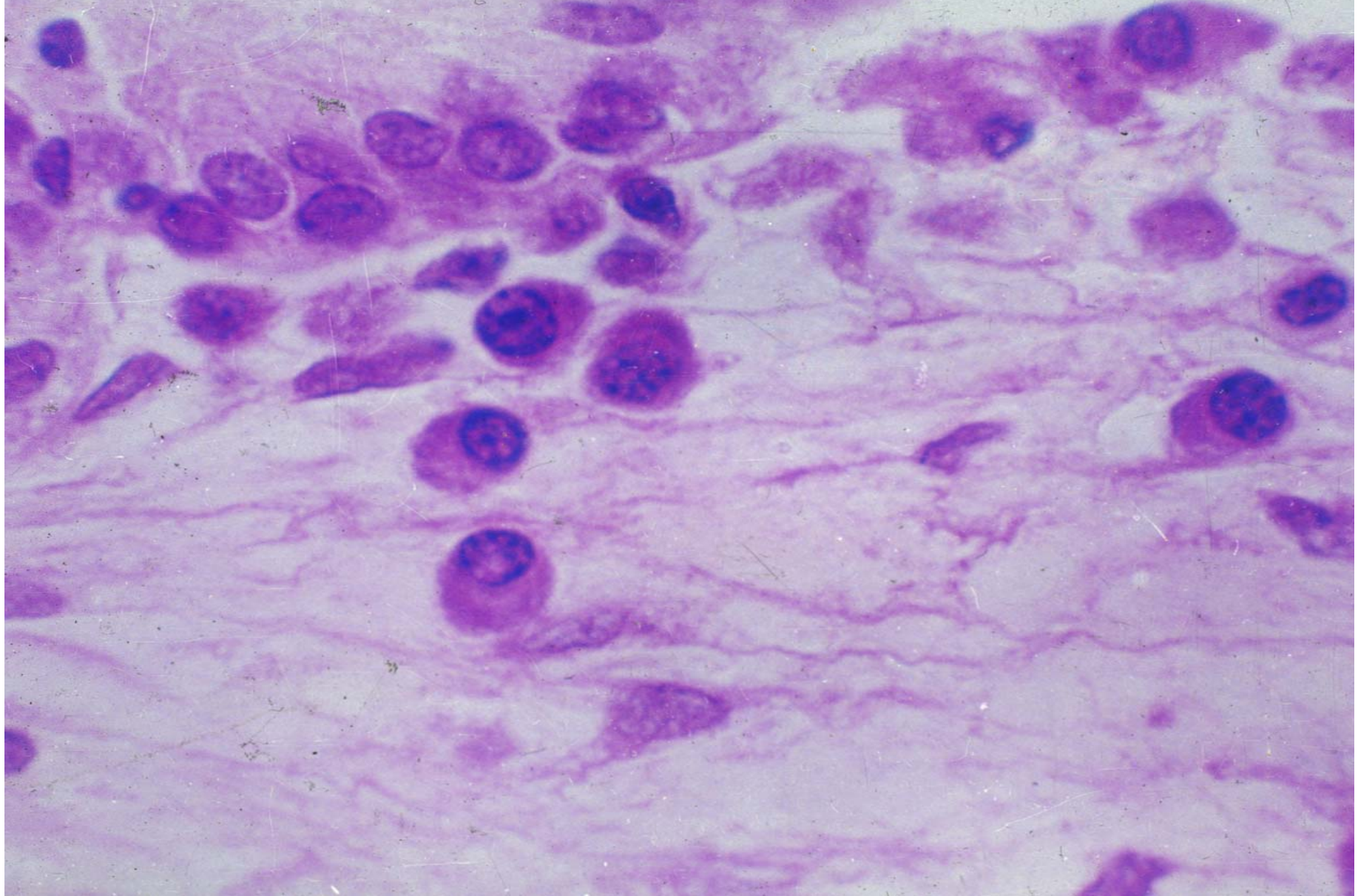
Fibroblast



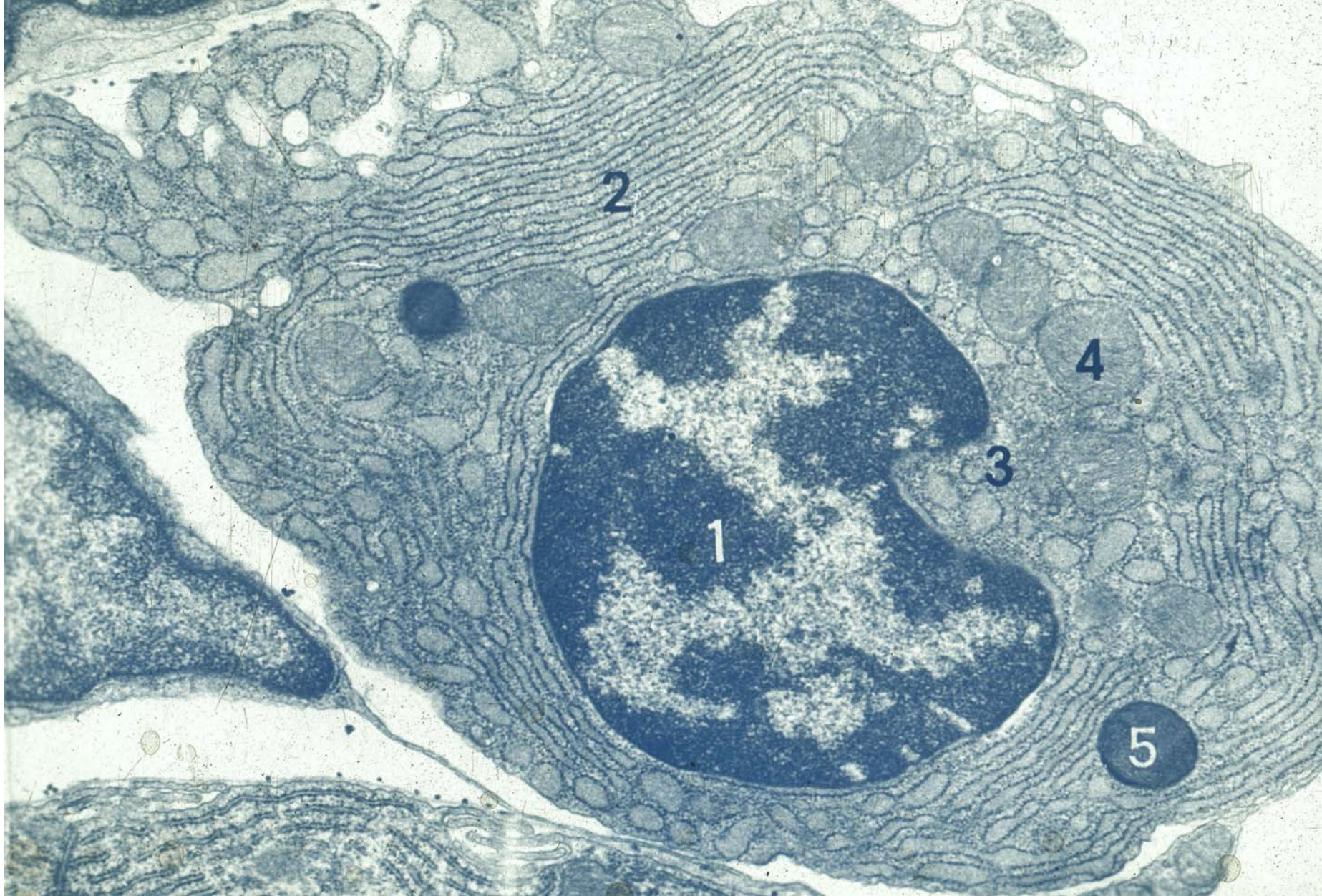
Macrophage



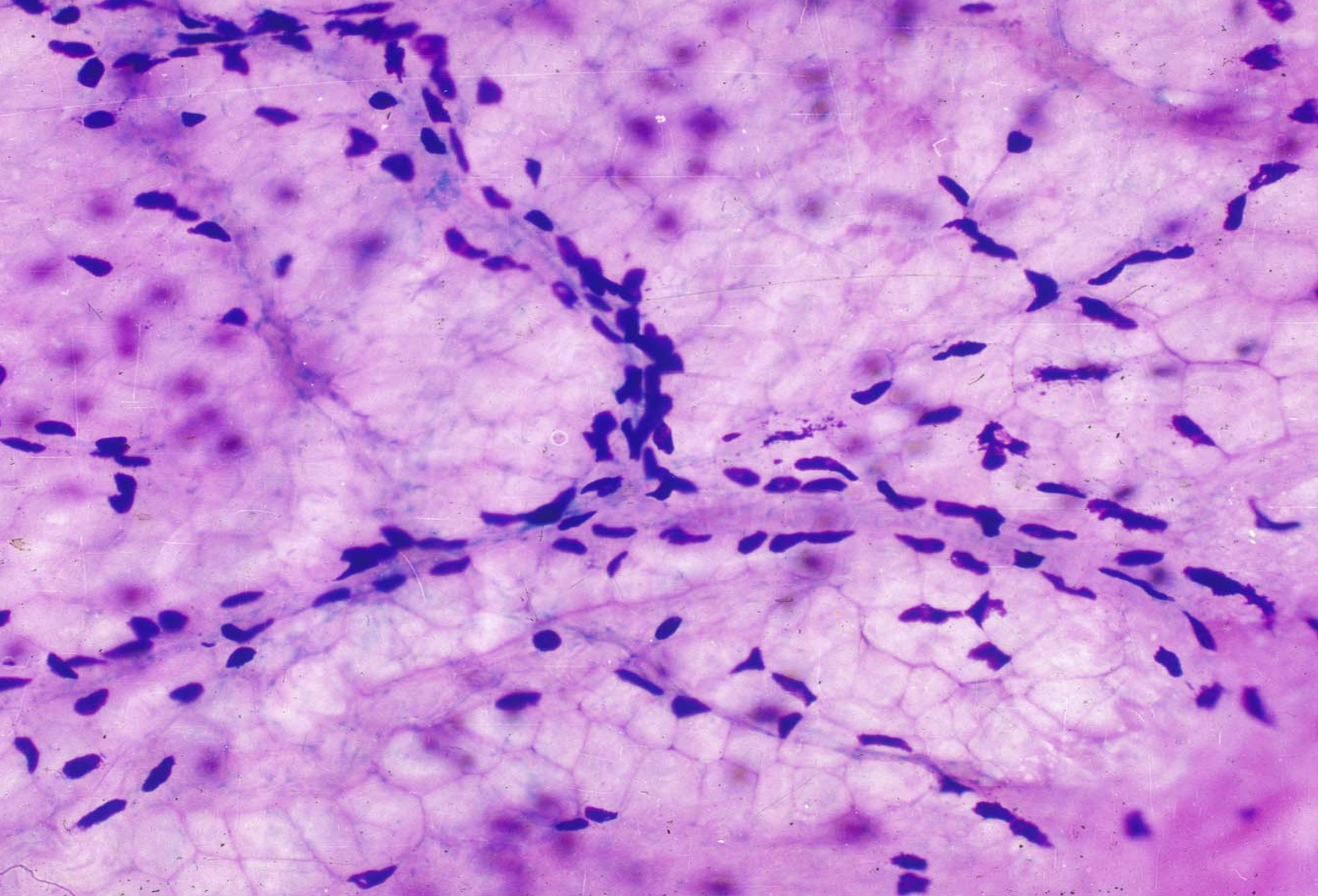
Macrophage



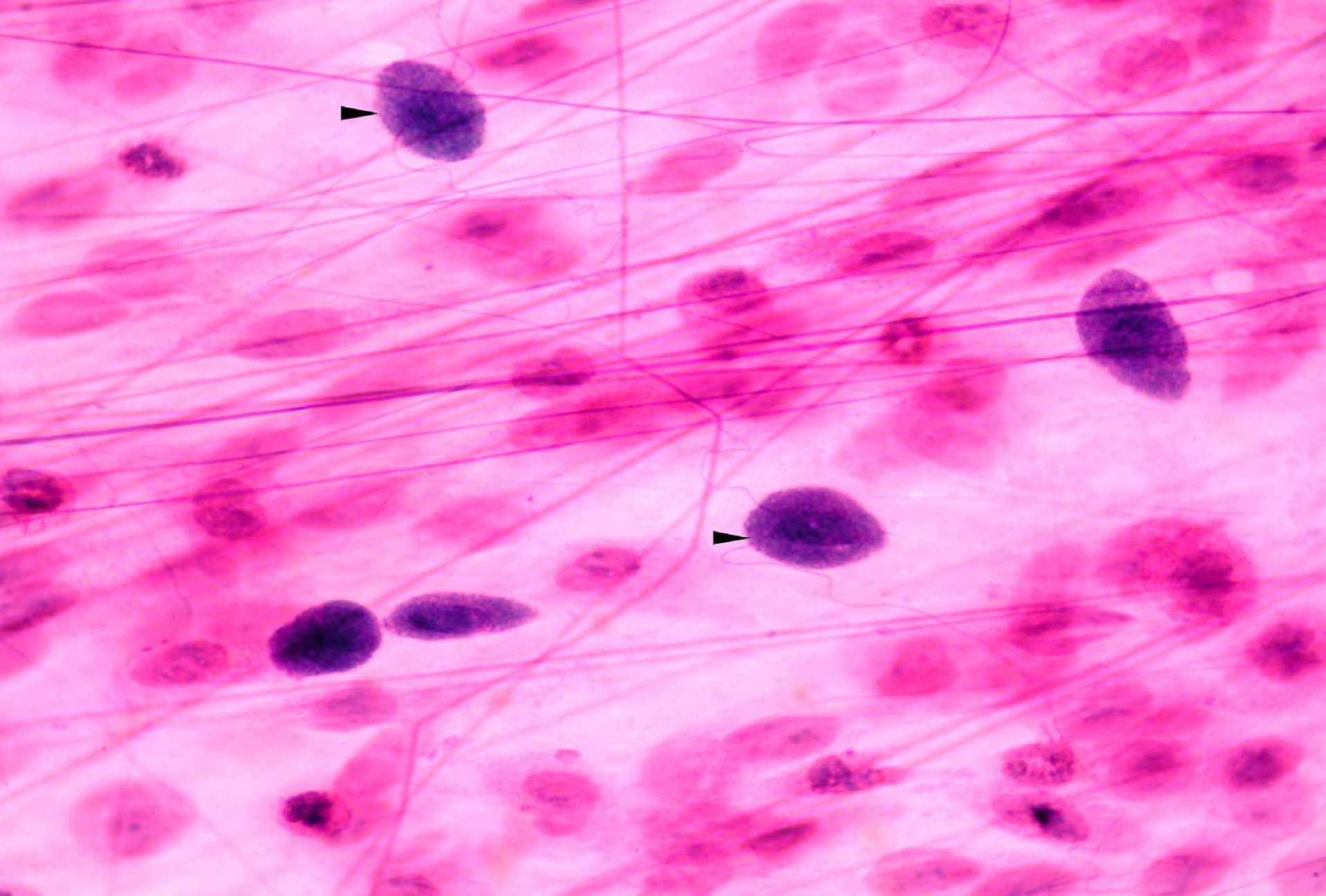
Plasma cell



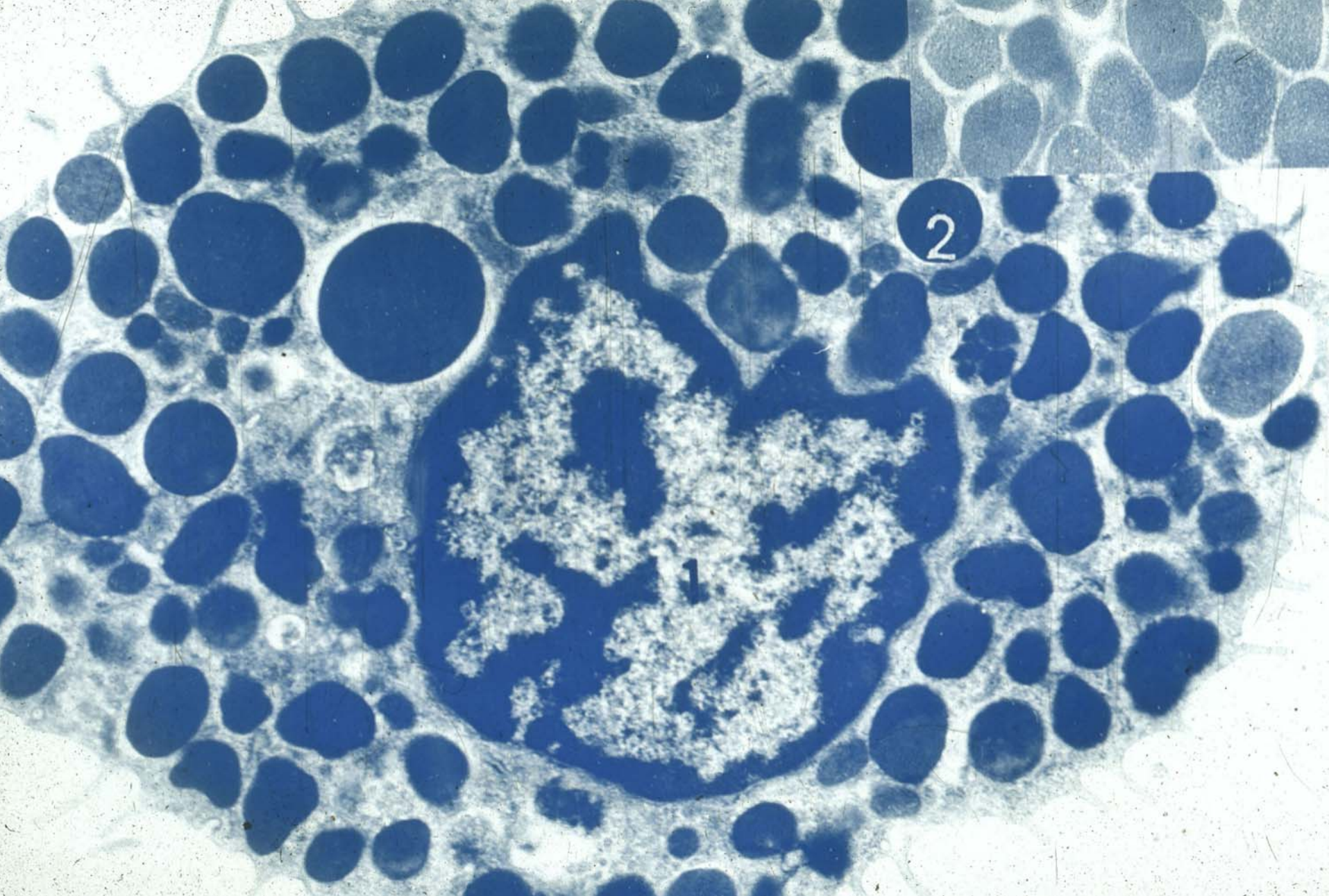
Plasma cell



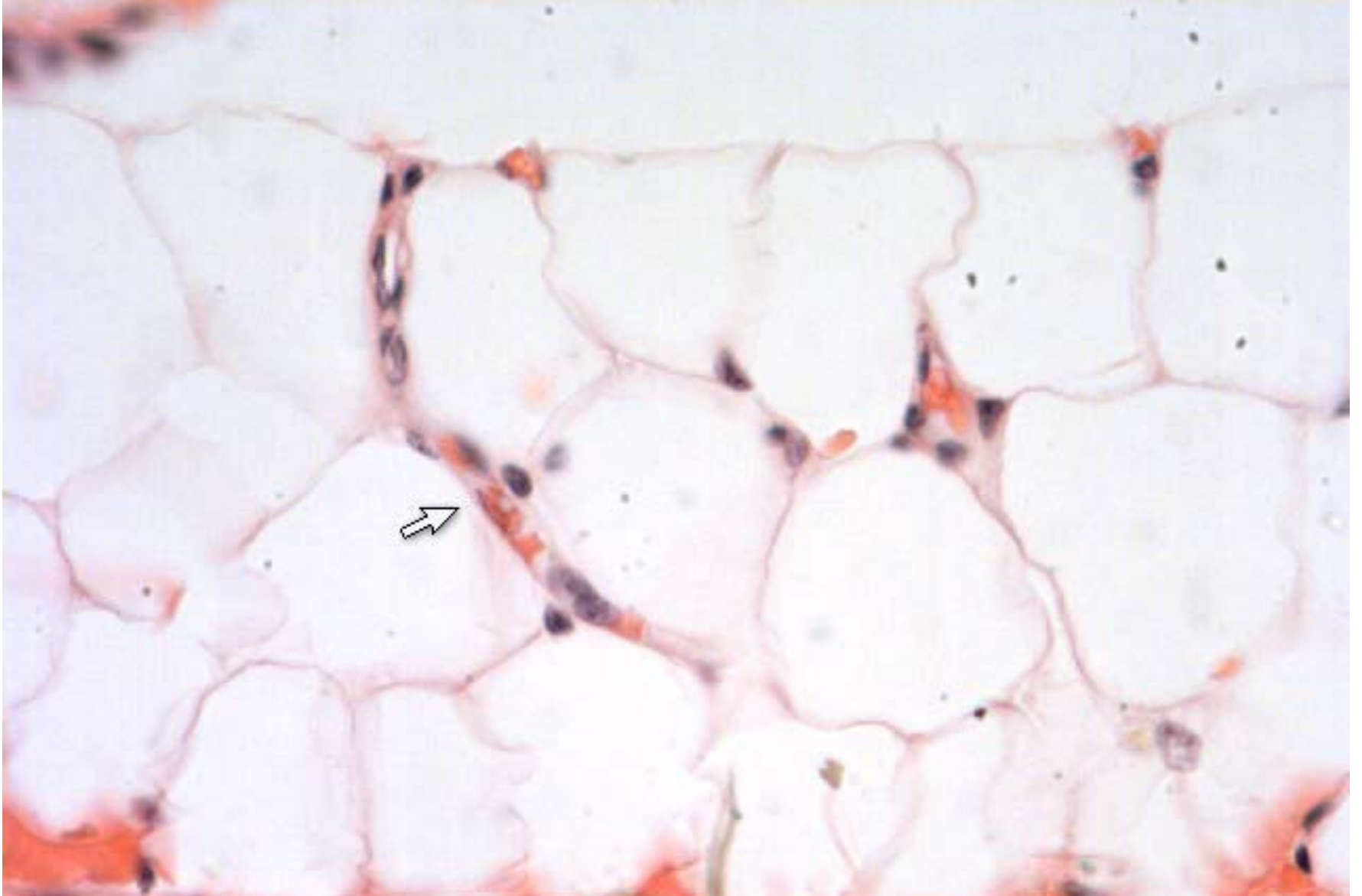
Mast cell



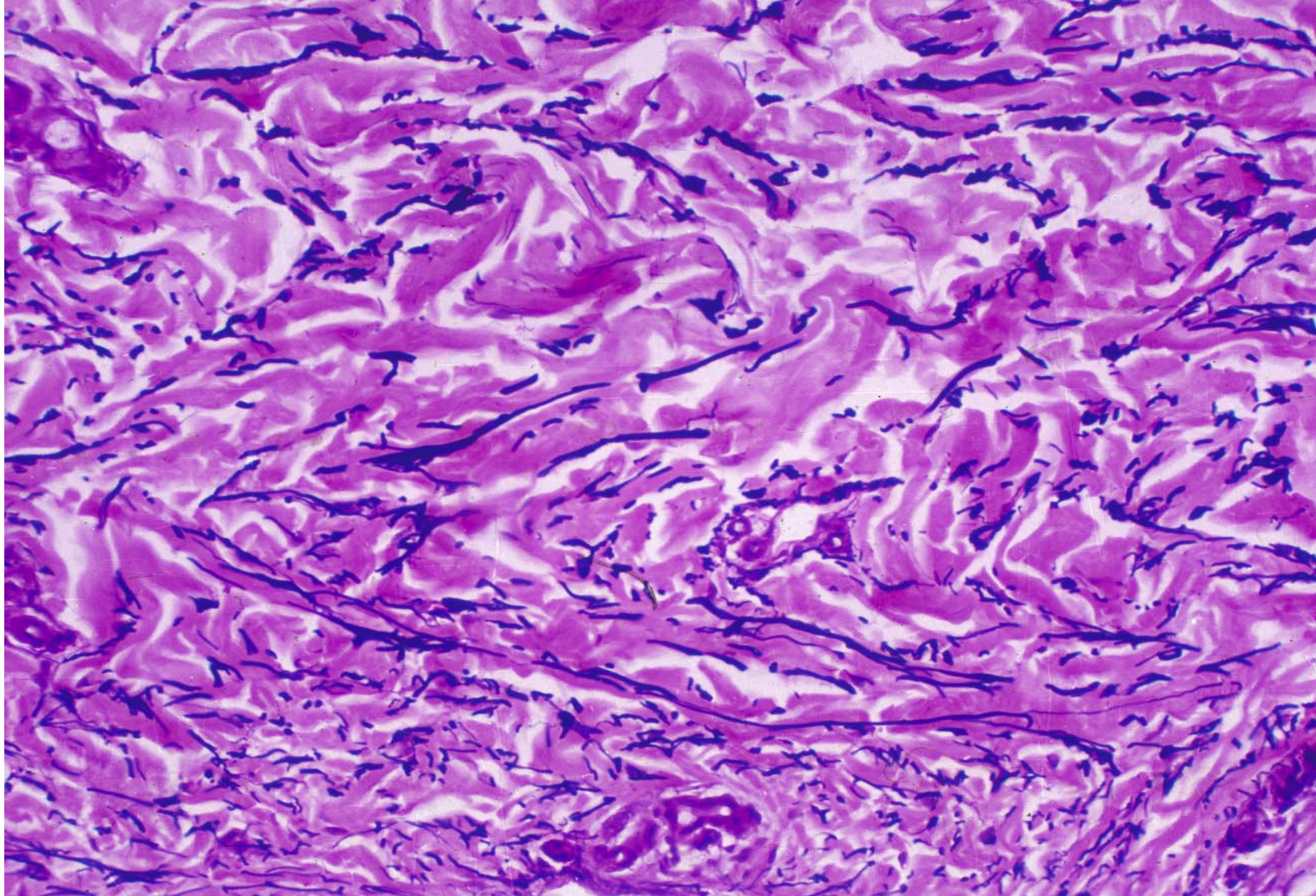
Mast cell



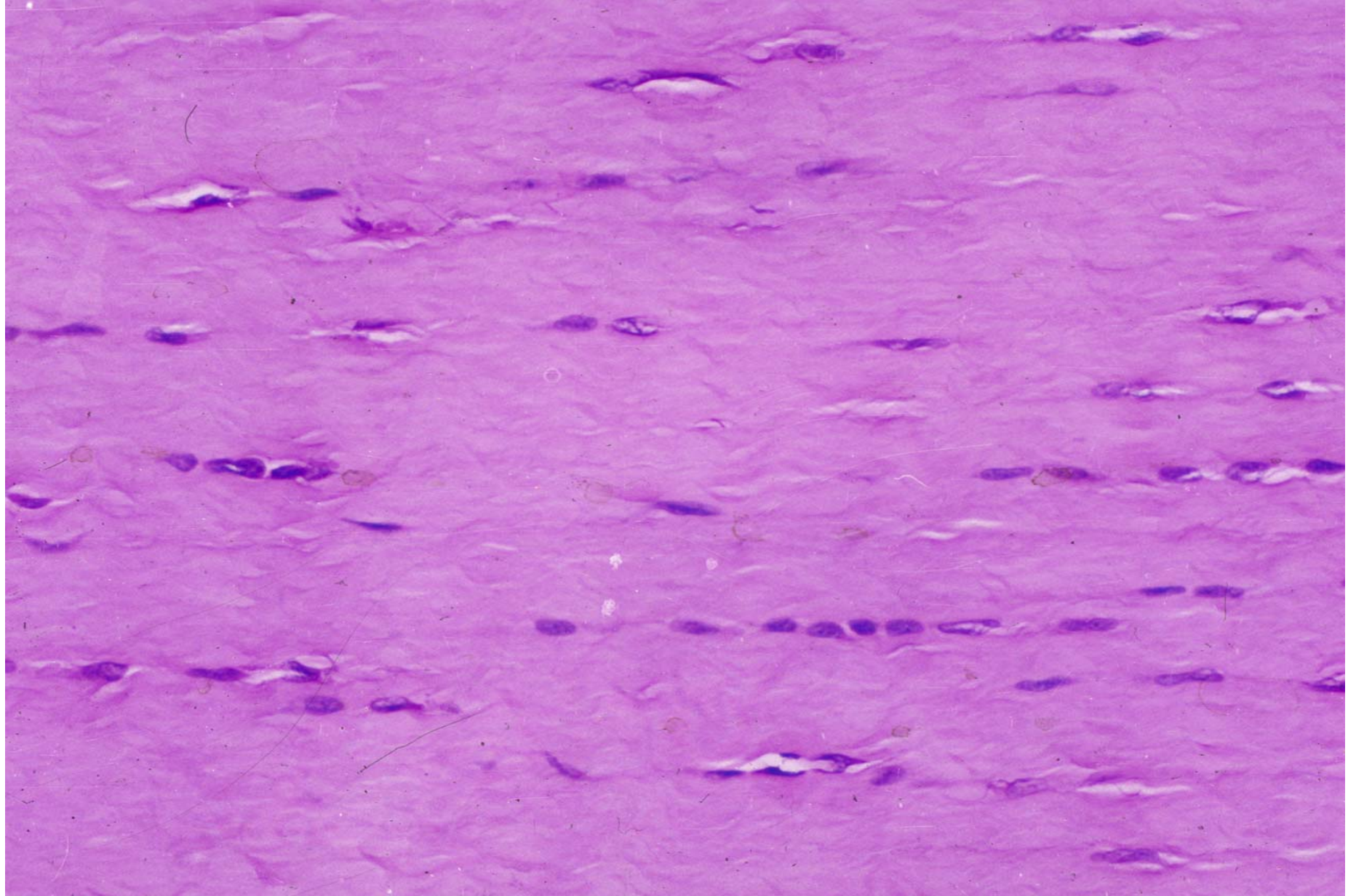
Mast cell



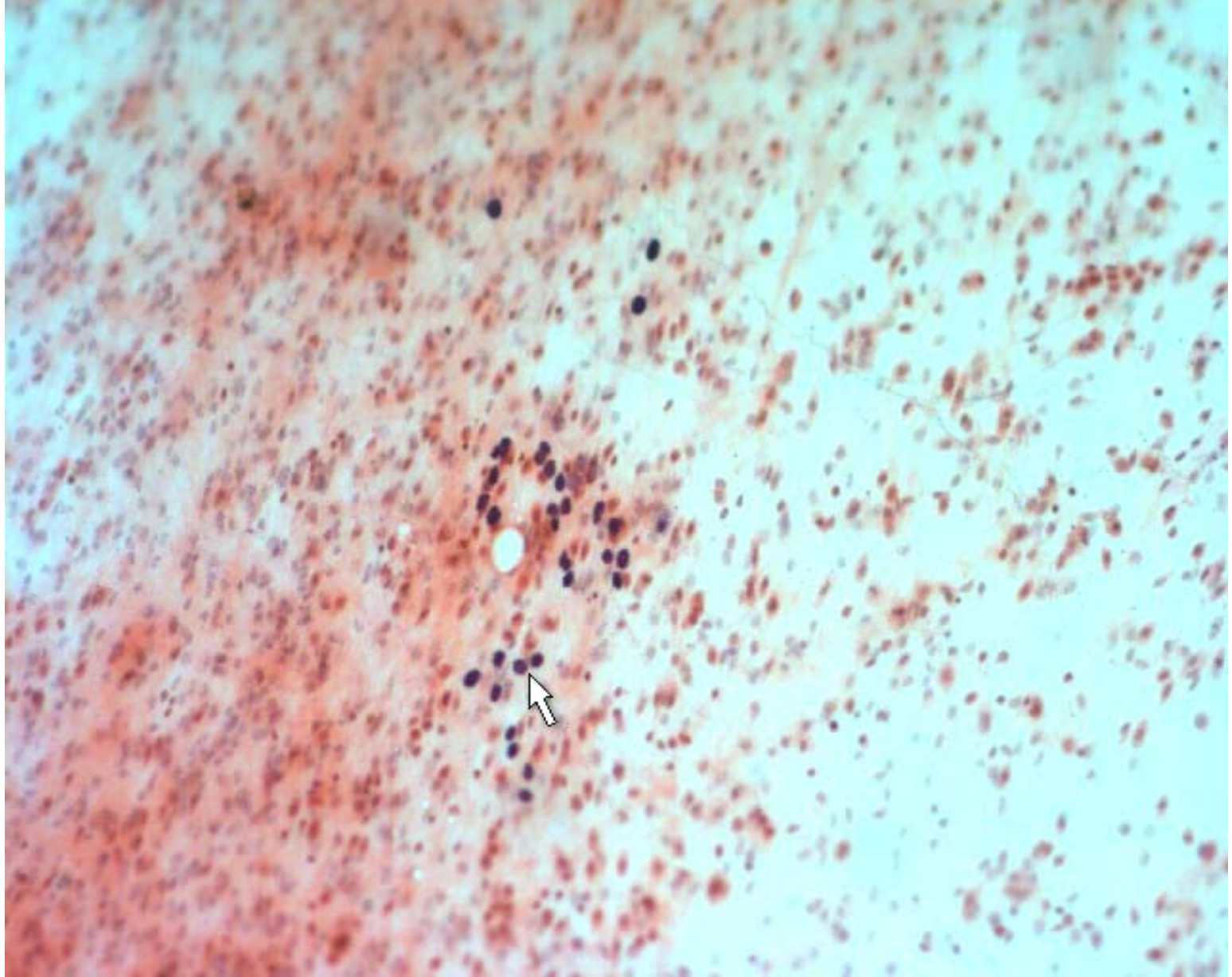
Fat cell



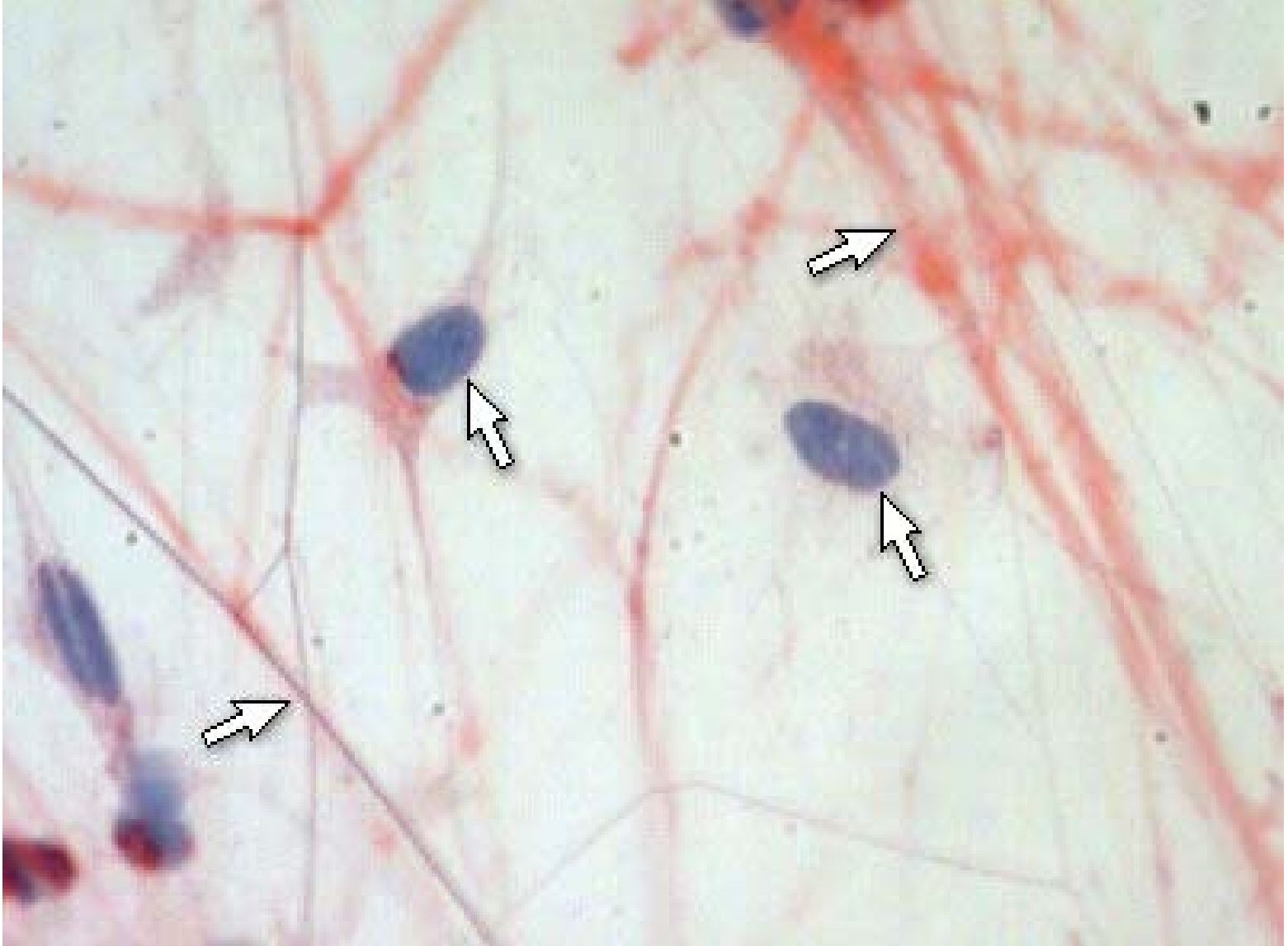
Dense irregular connective tissue



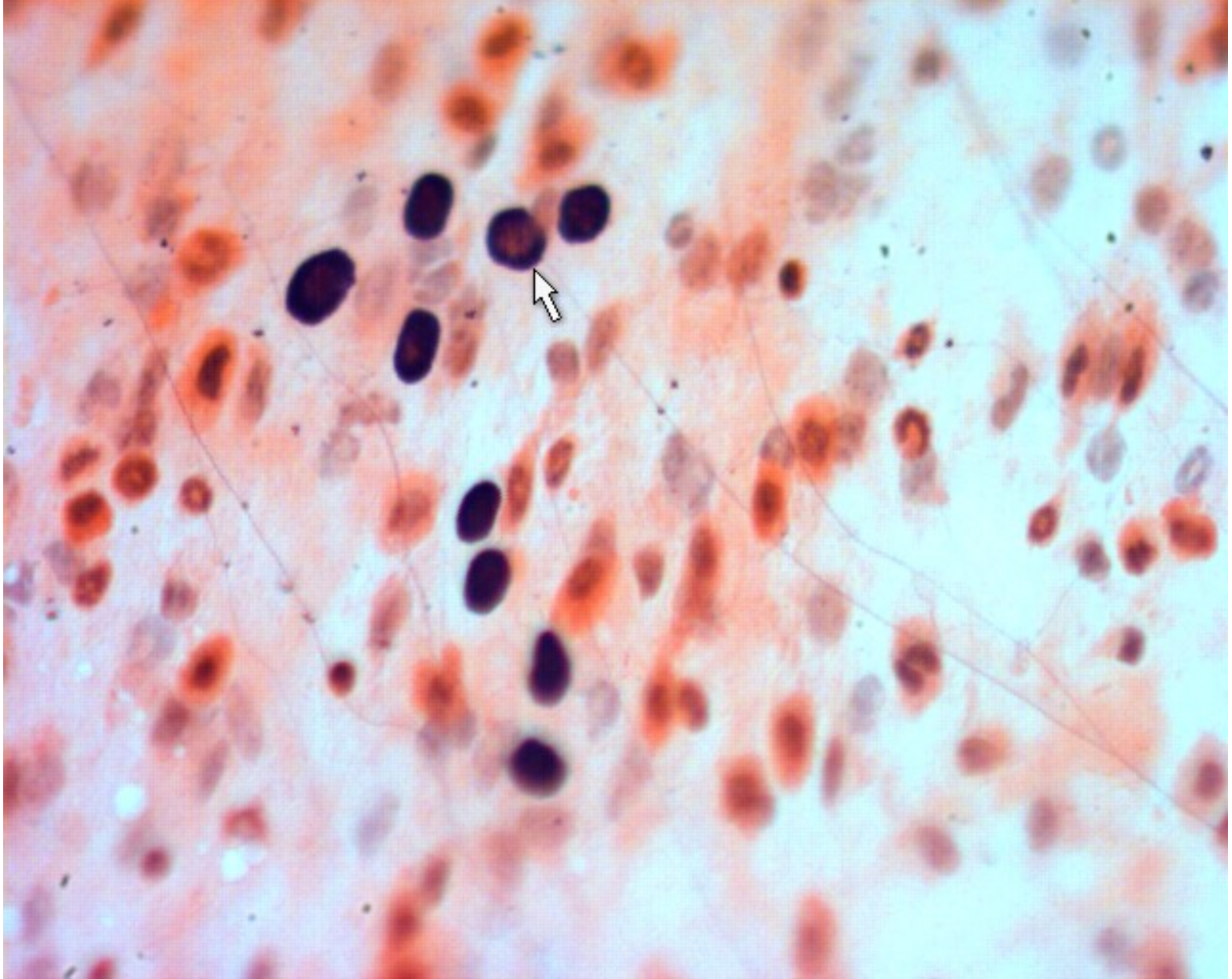
Dense regular connective tissue



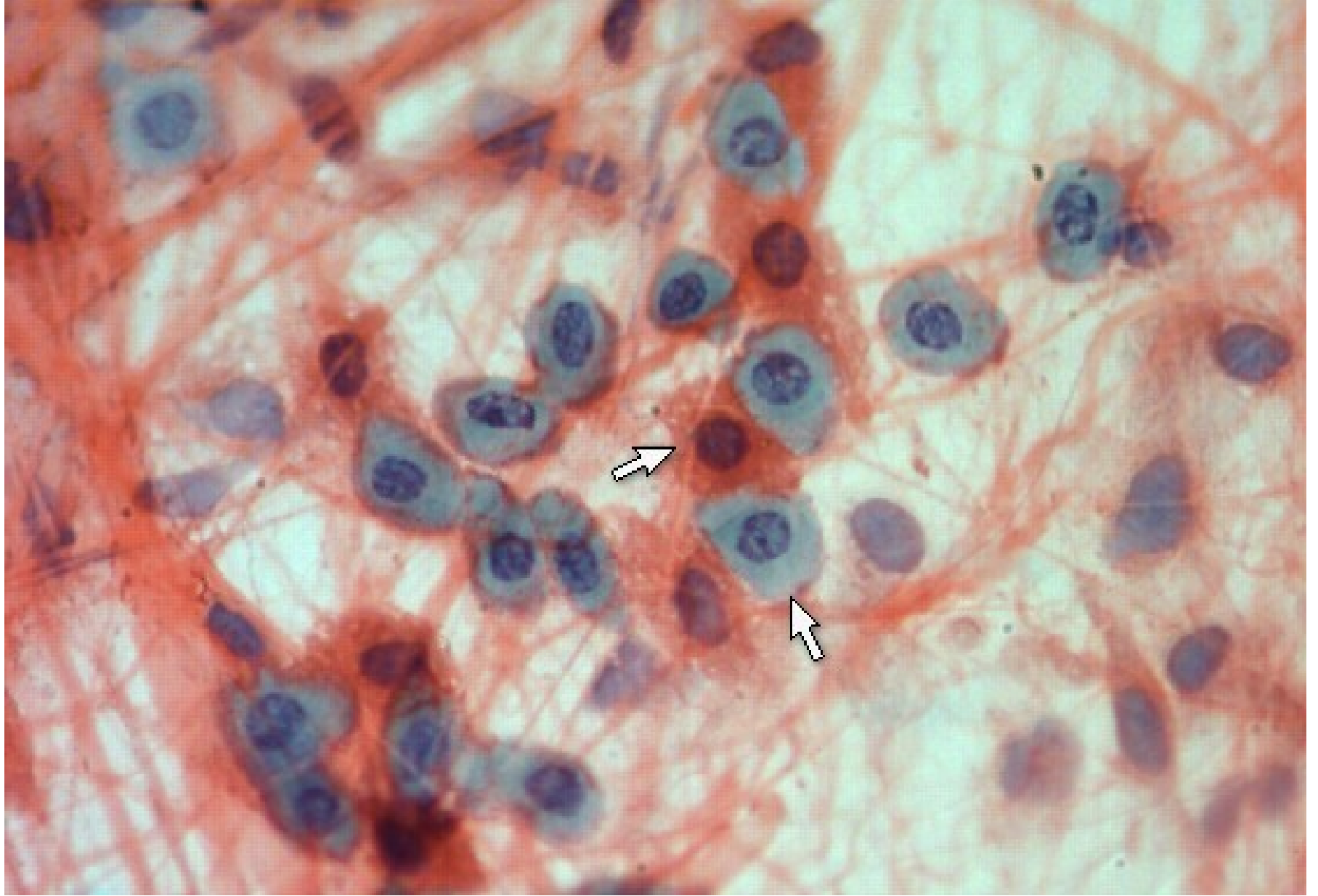
Mast cell



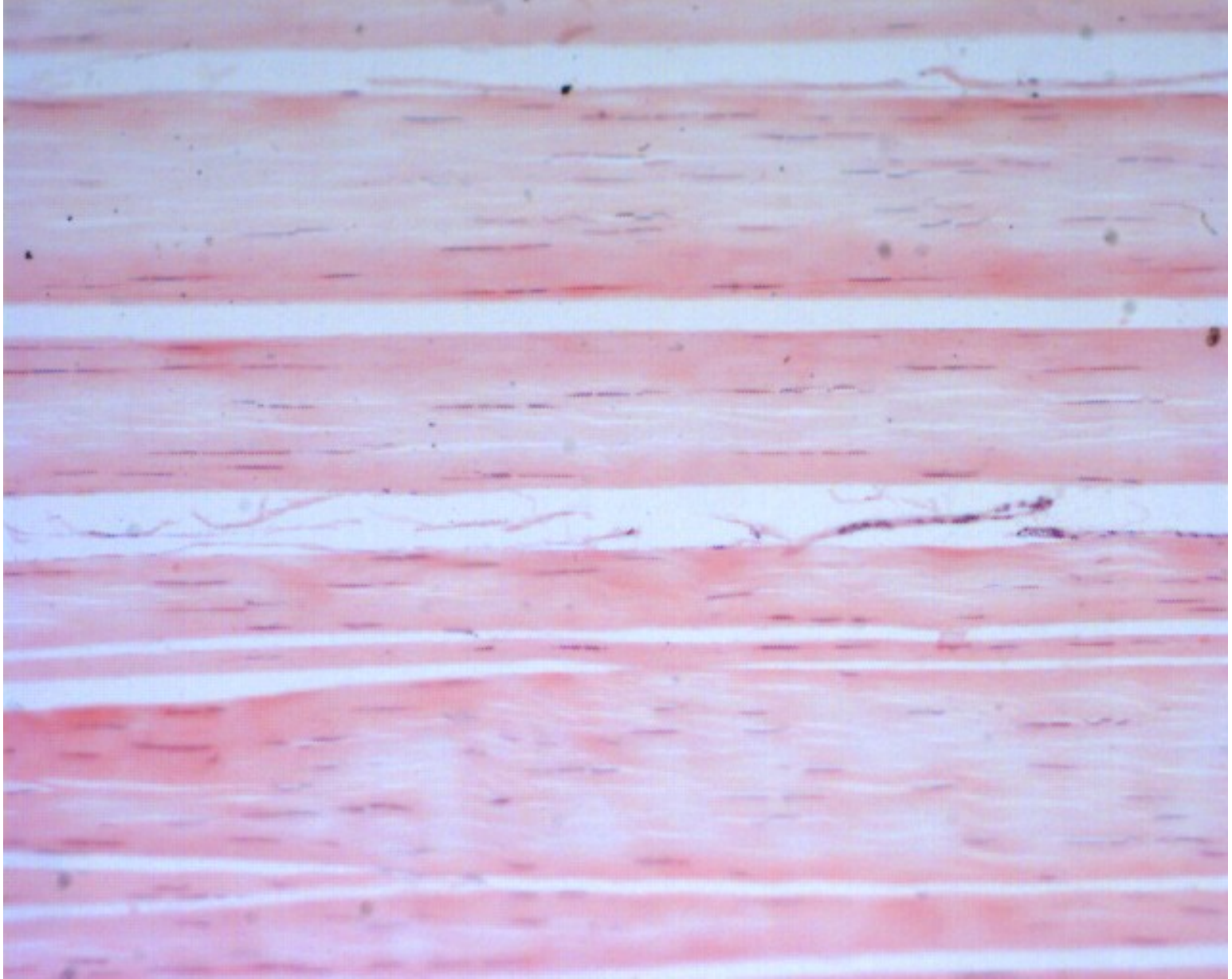
Fibroblast



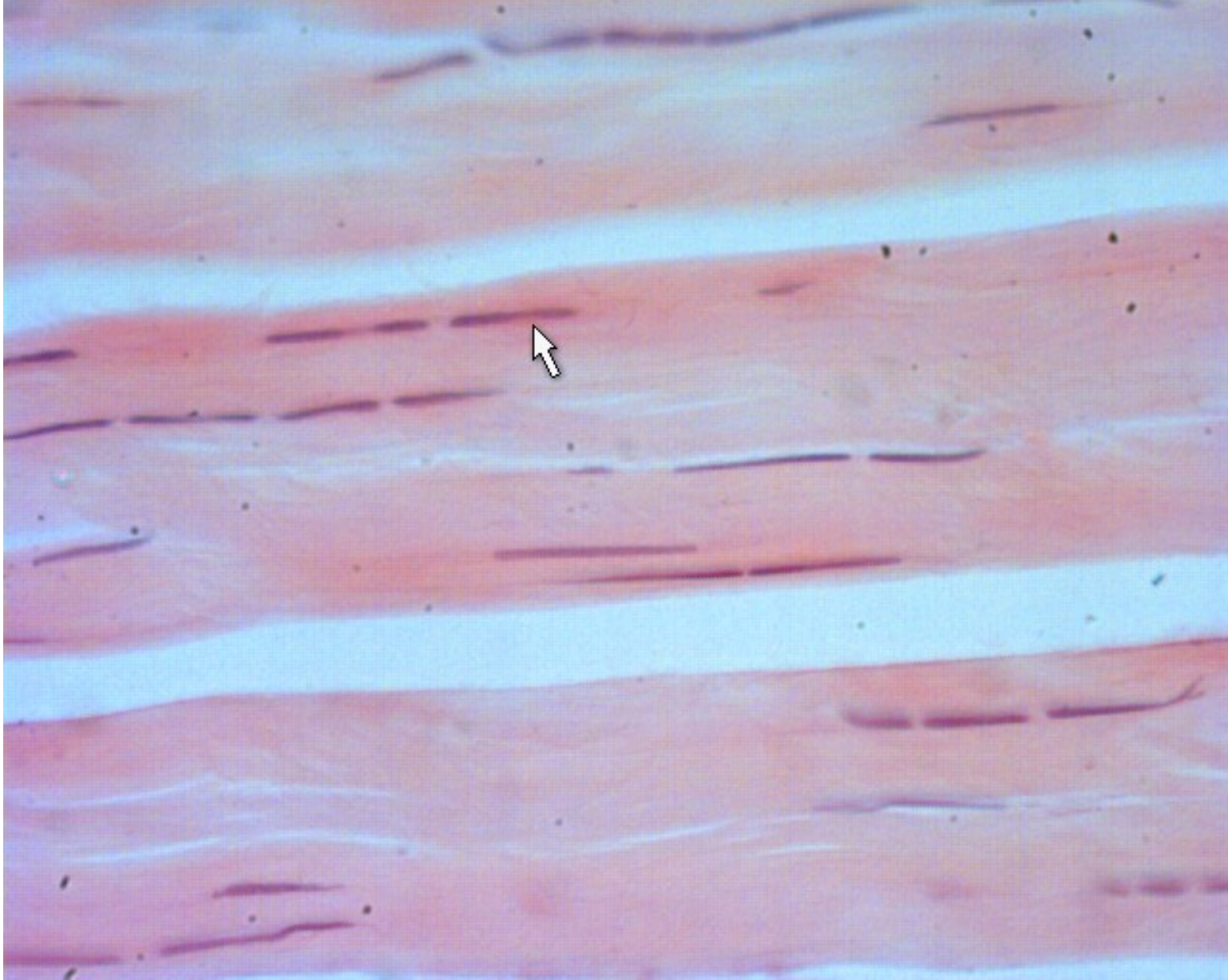
Mast cell



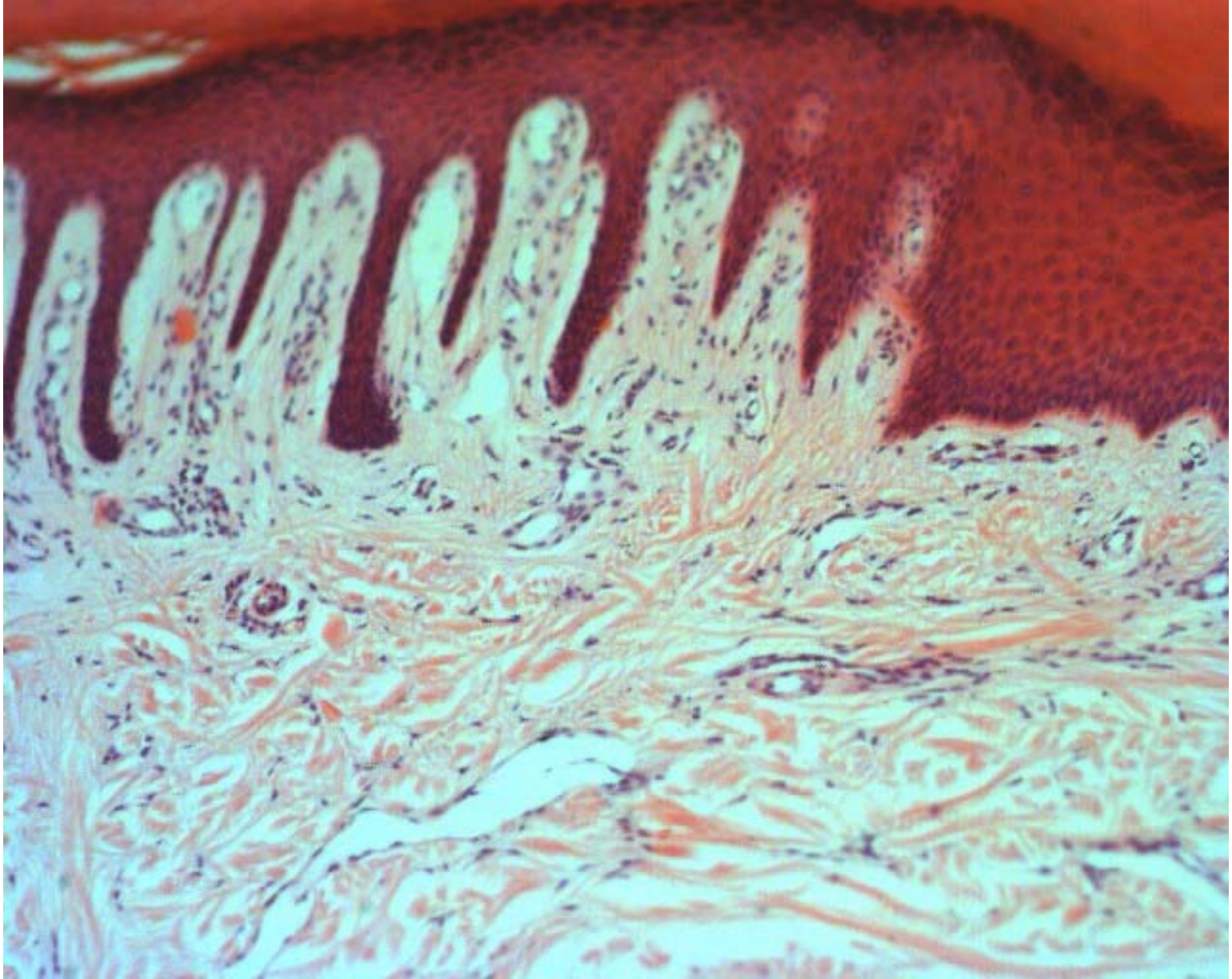
Mast cell



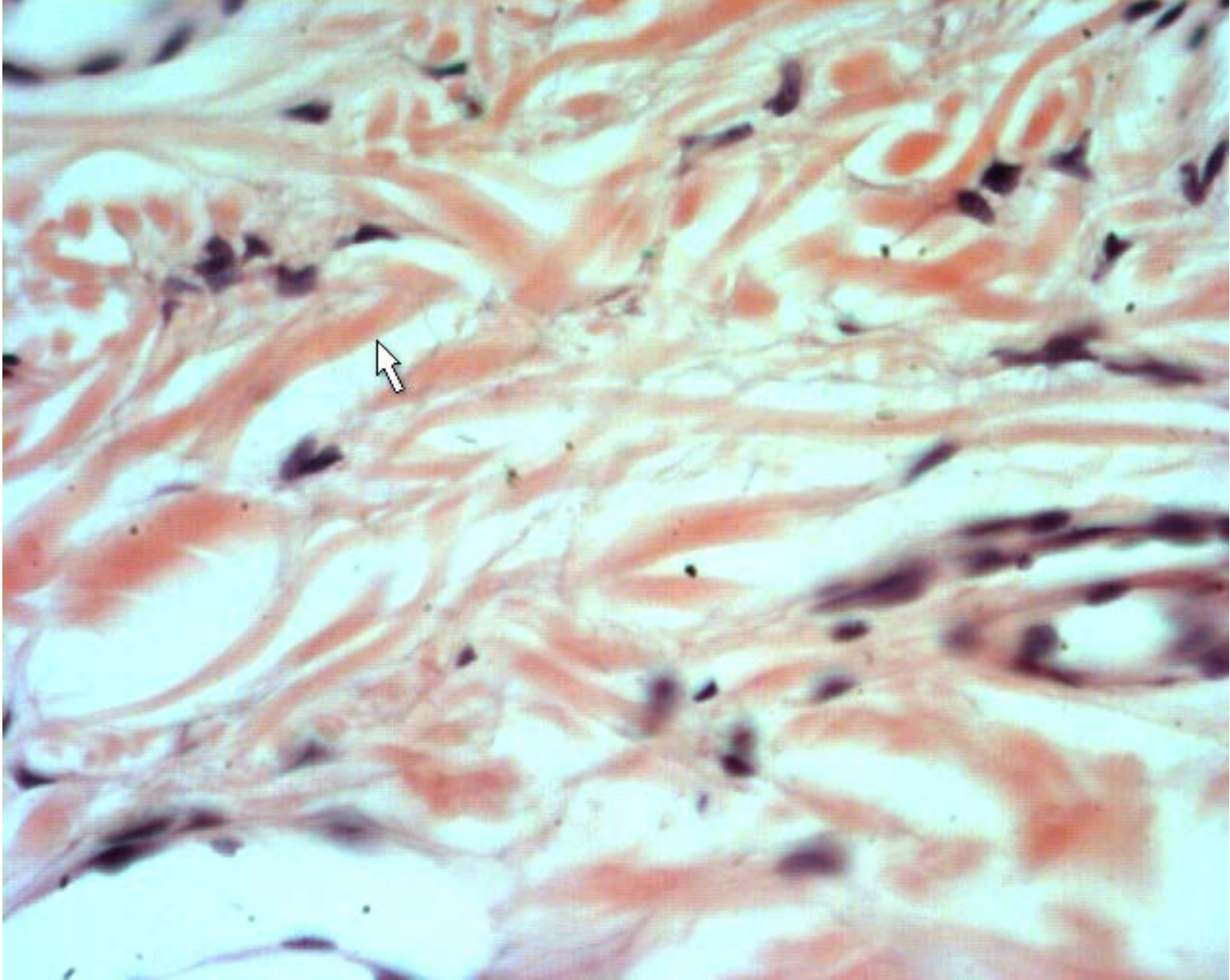
Dense regular connective tissue



Dense regular connective tissue



Dense irregular connective tissue



Dense irregular connective tissue