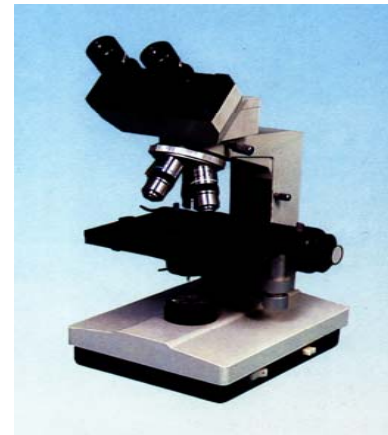
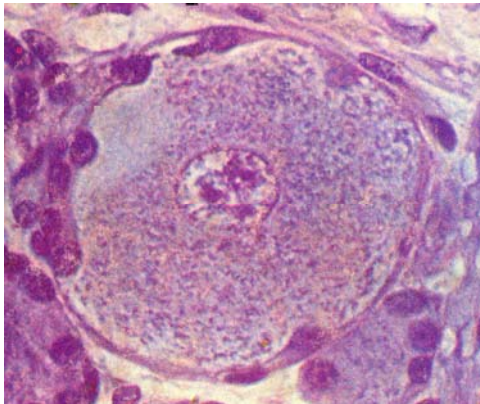
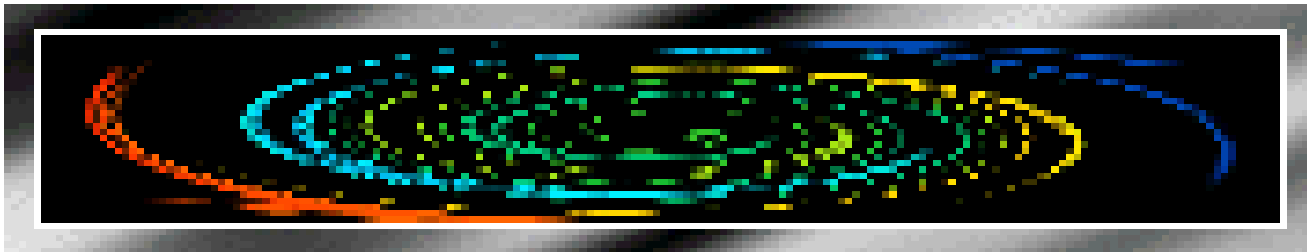


# Histology and Embryology



<b><u>Chapter 1 Introduction and Cell</u></b>	<b>Chapter 11 Digestive Tract</b>
<b>Chapter 2 Epithelial tissue</b>	<b>Chapter 12 Digestive Gland</b>
<b>Chapter 3 Connective Tissue</b>	<b>Chapter 13 Respiratory System</b>
<b>Chapter 4 Blood</b>	<b>Chapter 14 Urinary System</b>
<b>Chapter 5 Cartilage and Bone</b>	<b>Chapter 15 Endocrine System</b>
<b>Chapter 6 Muscle Tissue</b>	<b>Chapter 16 Sense Organ</b>
<b>Chapter 7 Nerve Tissue</b>	<b>Chapter 17 Male Reproduction</b>
<b>Chapter 8 Circulatory System</b>	<b>Chapter 18 Female Reproduction</b>
<b>Chapter 9 Immune System</b>	<b>Chapter 19 Embryology 1</b>
<b>Chapter 10 Skin</b>	<b>Chapter 20 Embryology 2</b>

# Chapter 1 Introduction and Cell

**I Recorder : Methods of Histology**

**II Slides**

**III How to use the light microscopy**

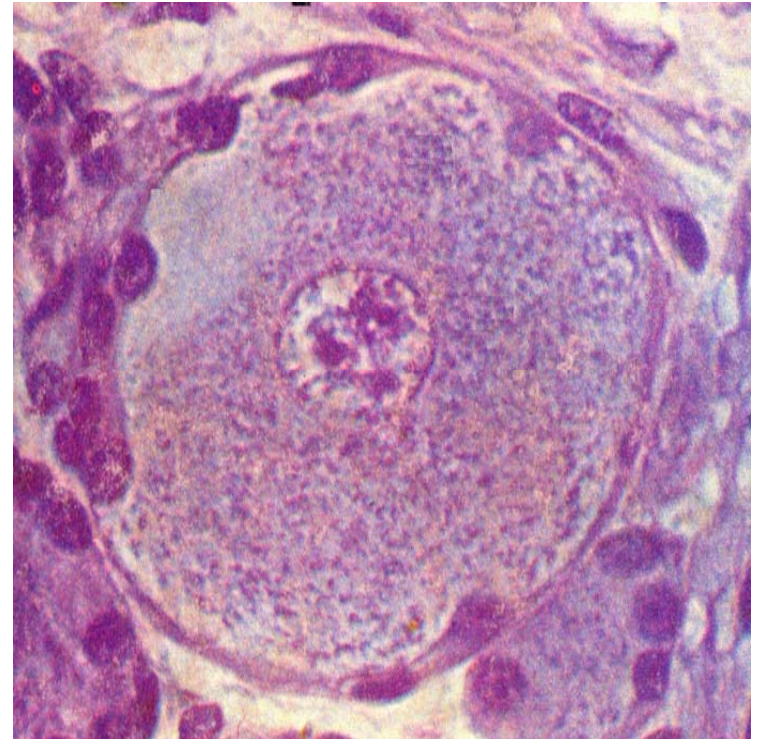
**IV Sections**

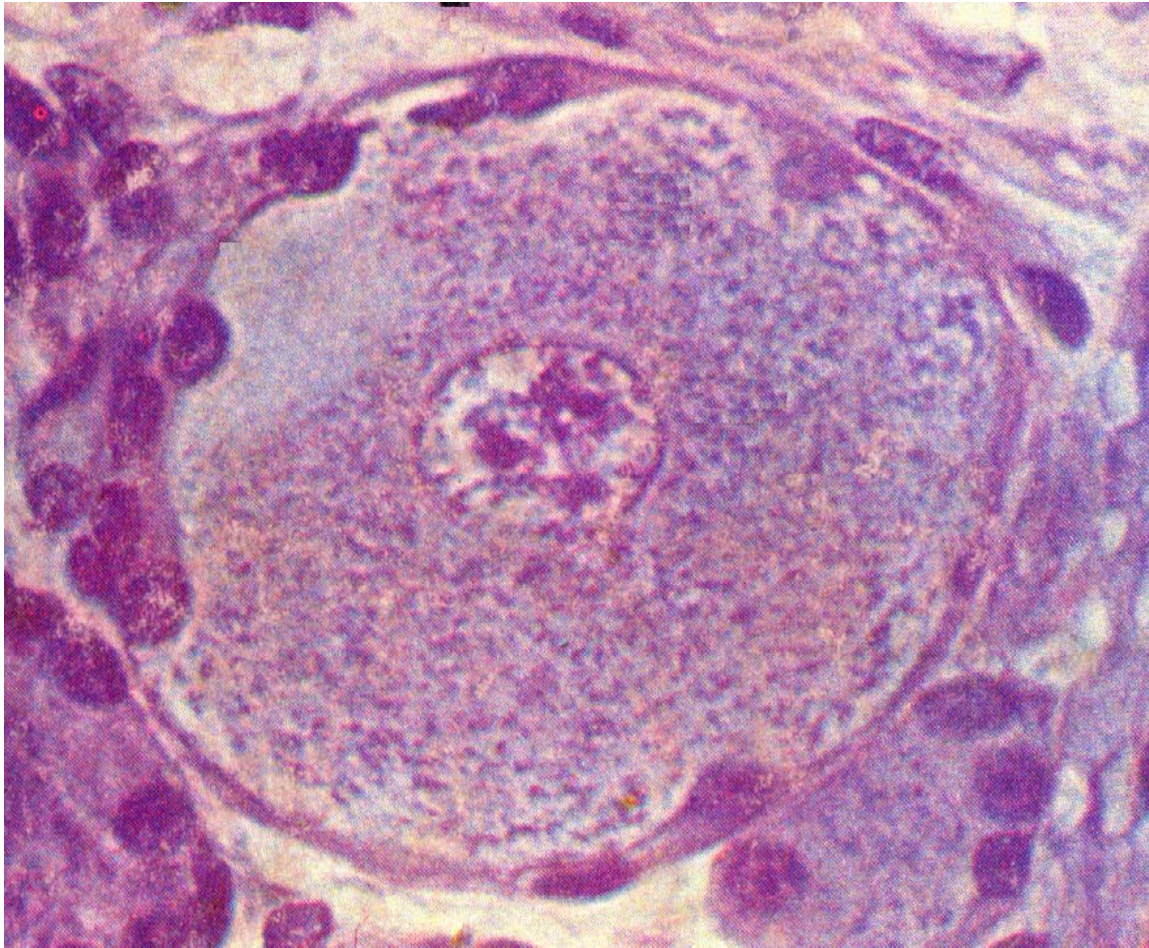
**NO.16 Spinal ganglion**

**V Drawing**

**pseudounipolar neurons and satellite cell**

**VI Summary**





**pseudounipolar neurons and satellite cell**

**Material :**

**Staining :**

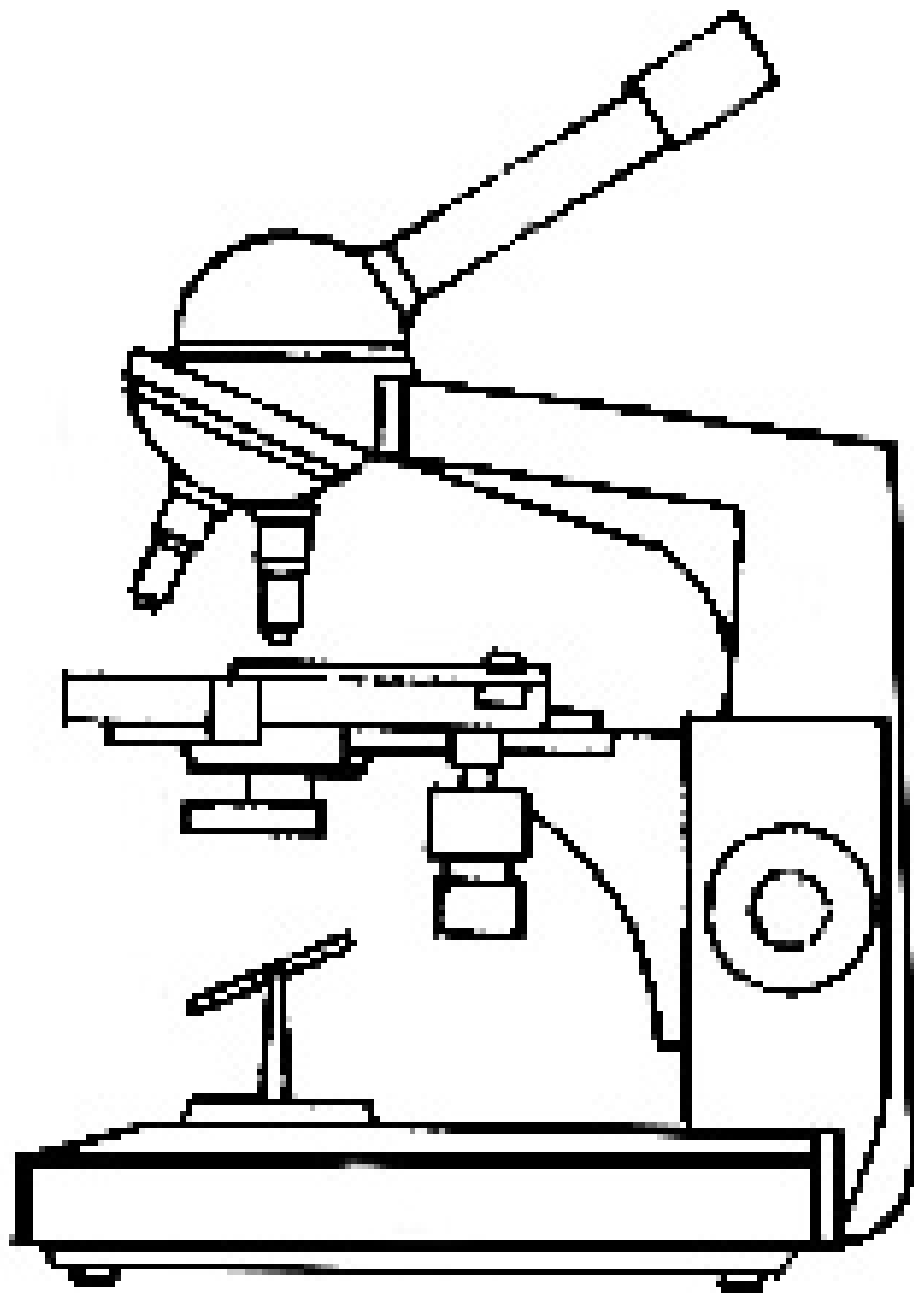
**Amplification :**

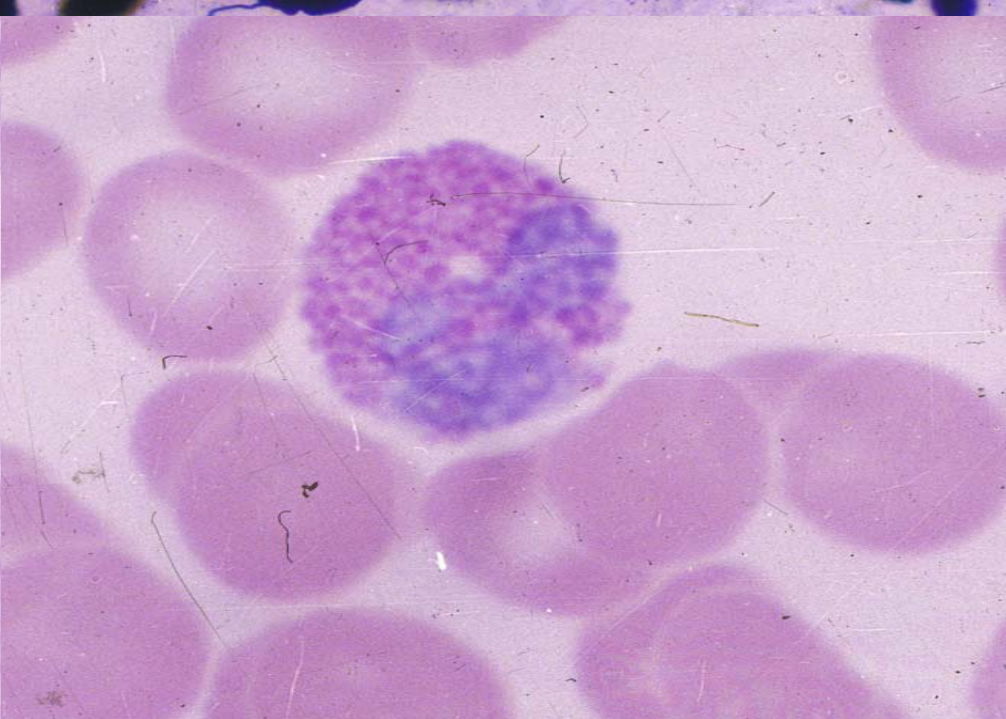
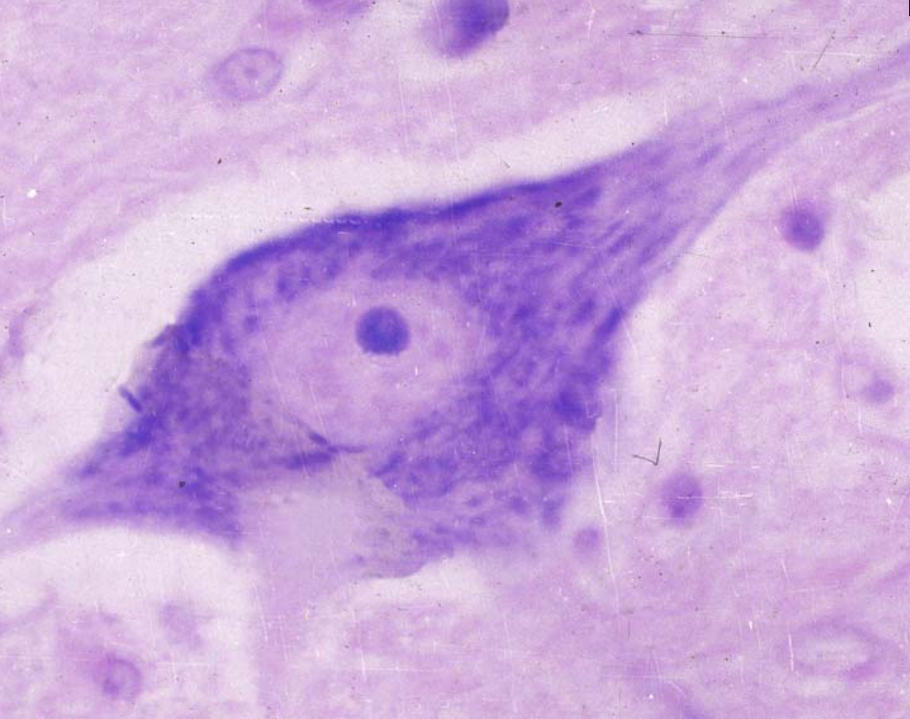
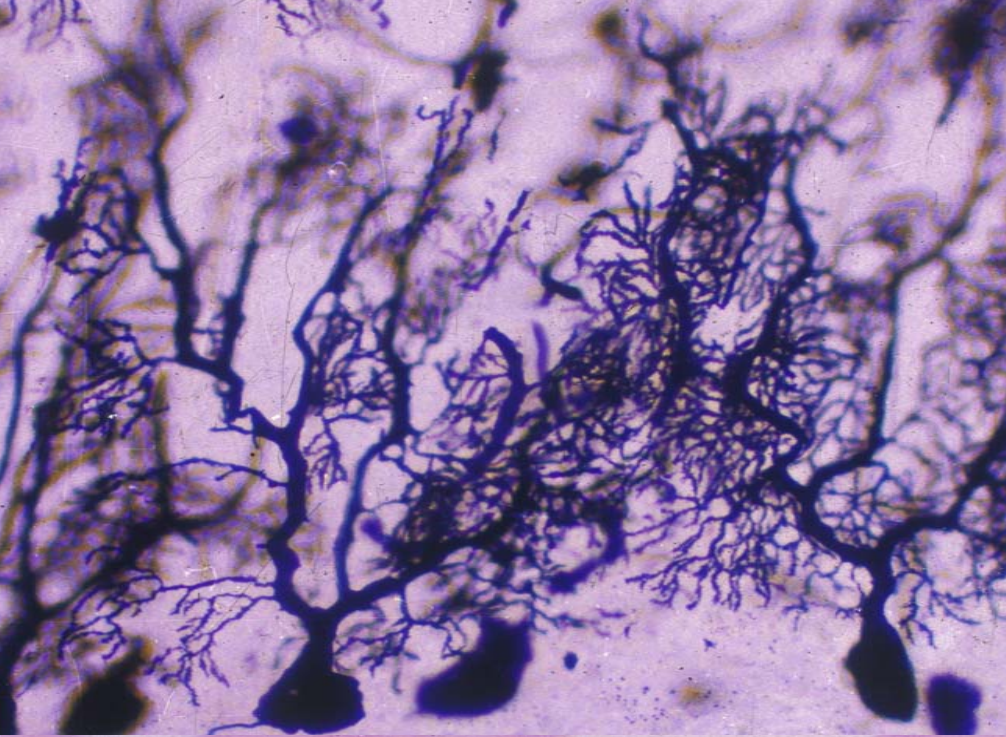
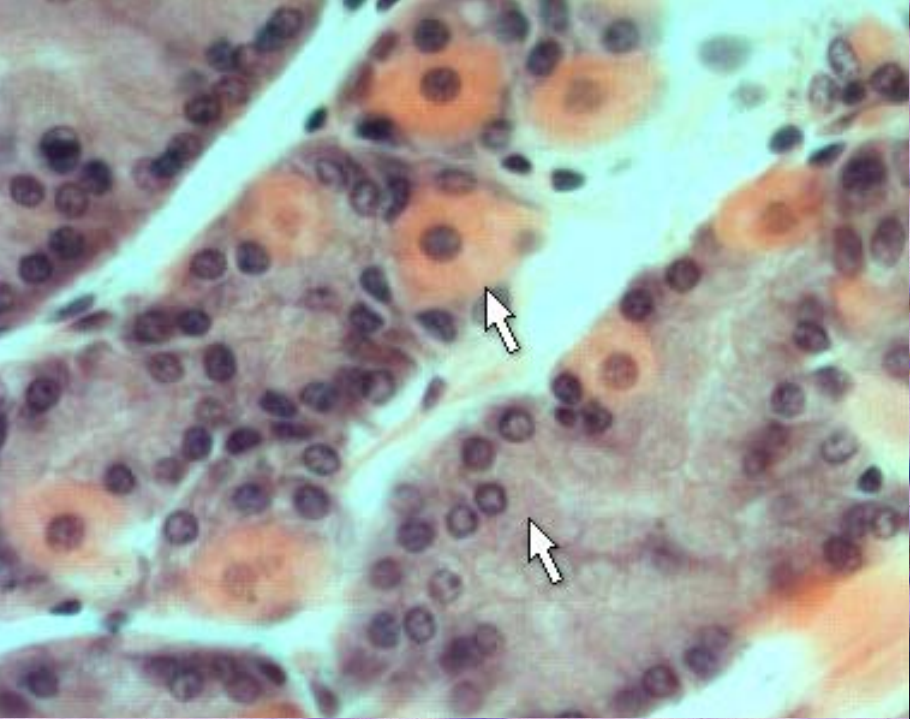
**Date:**



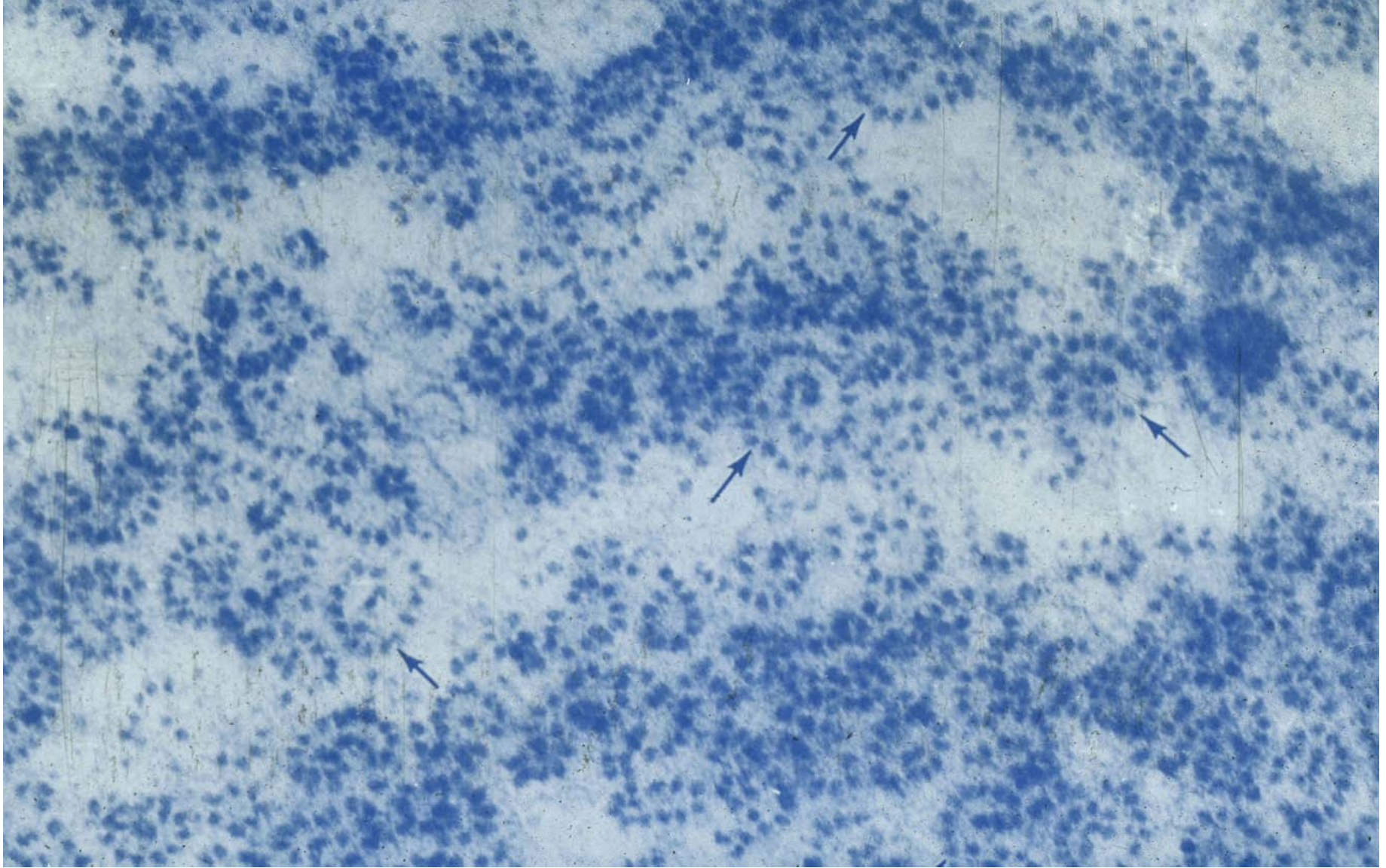
# Summery

- **H-E stain, acidophilia, basodophilia**
- **The microstructure of the cell**
- **The ultrastructure of the organelles**



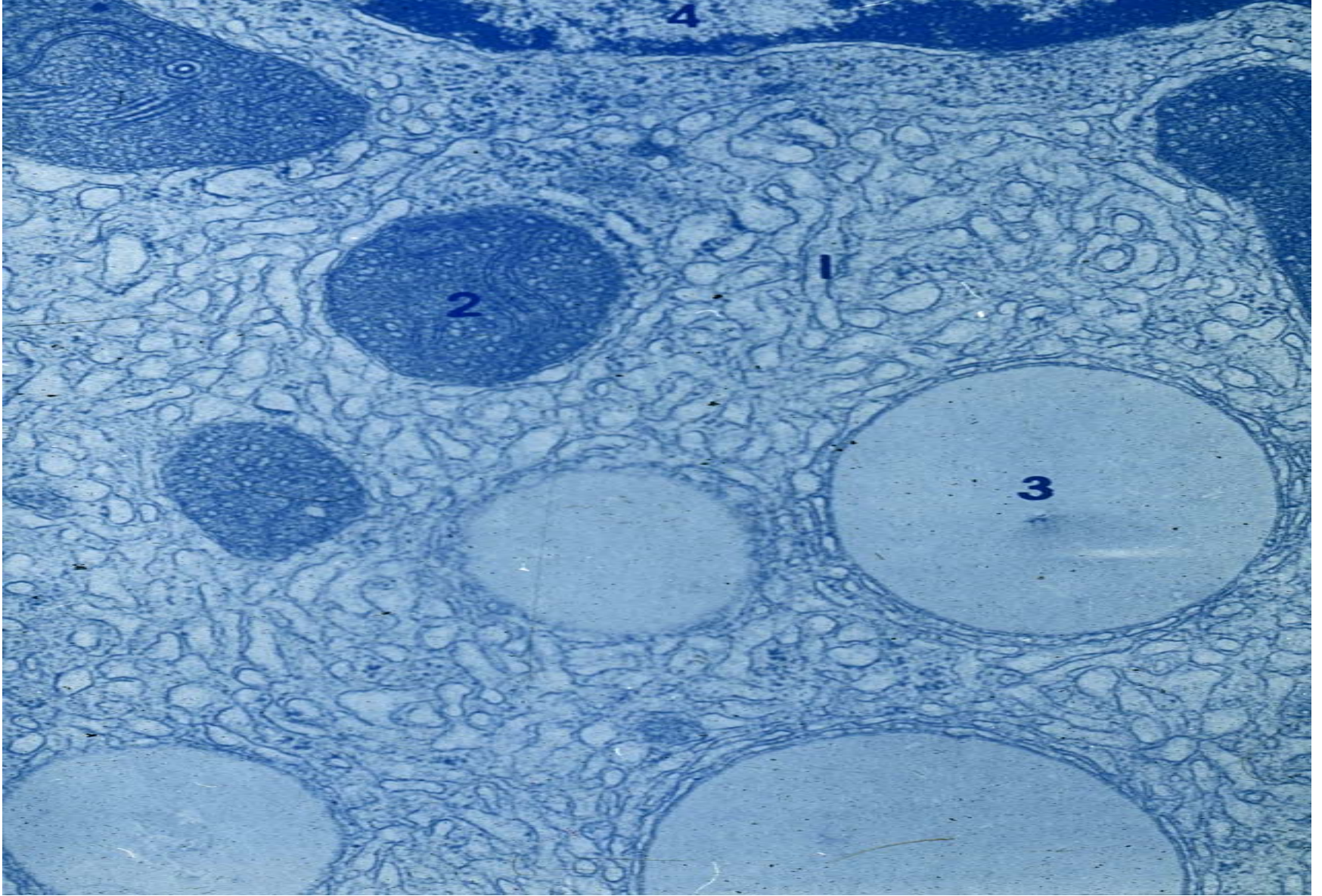






**Free ribosome and Polyribosome**





**Smooth endoplasmic reticulum (SER) and Fat drop**





**Rough endoplasmic reticulum (RER) and Mitochondrion**



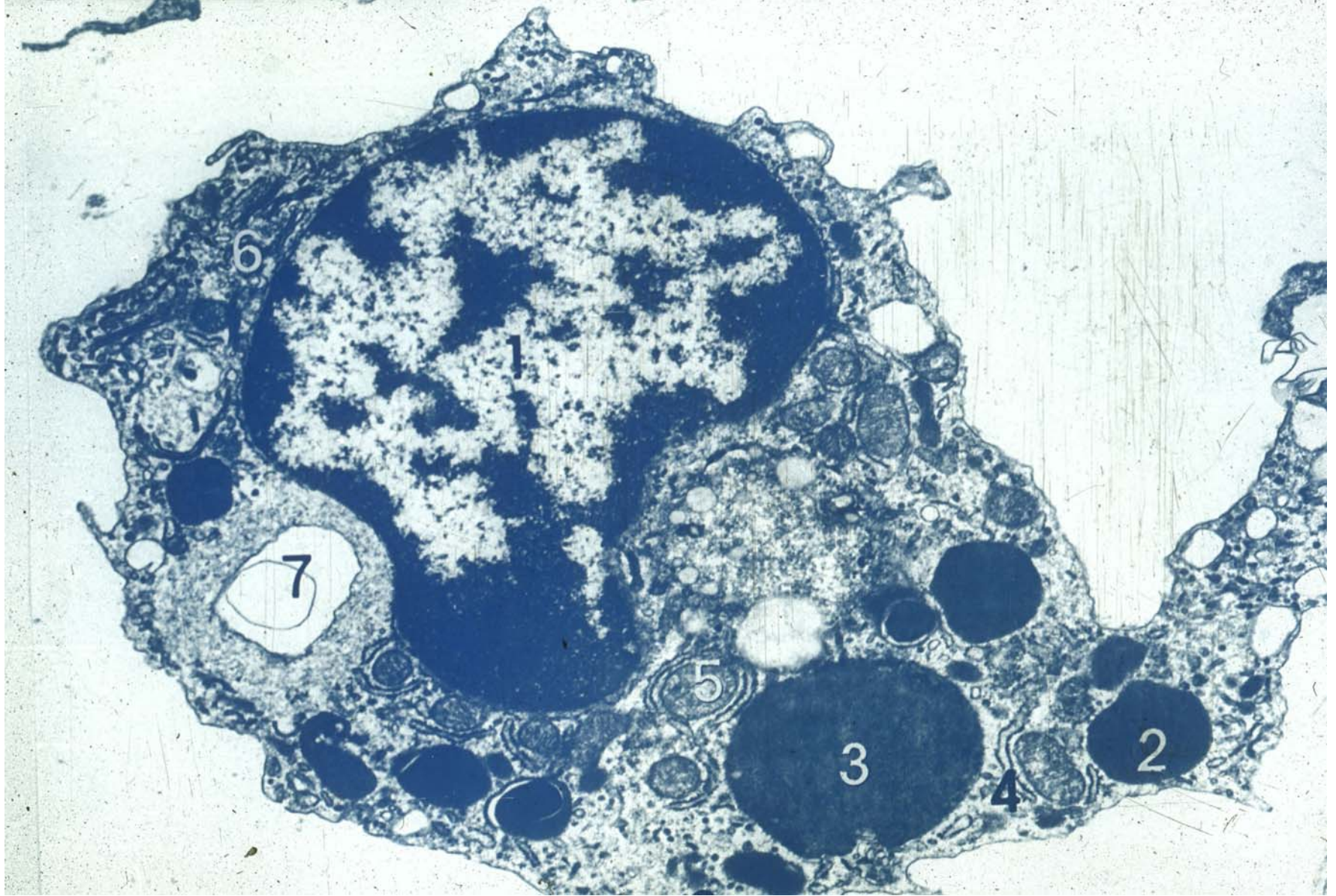
**Golgi complex apparatus**





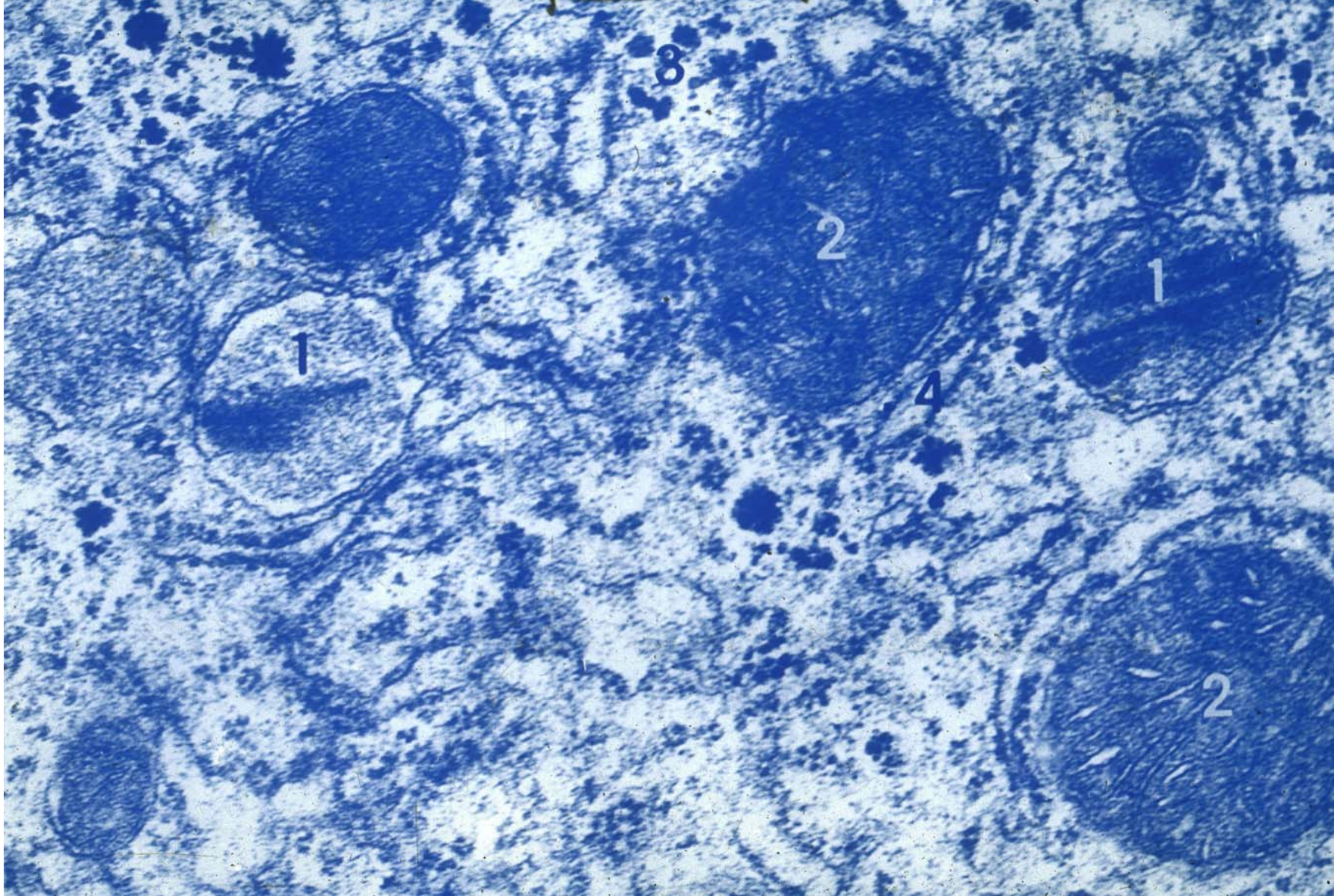
**Golgi complex apparatus**





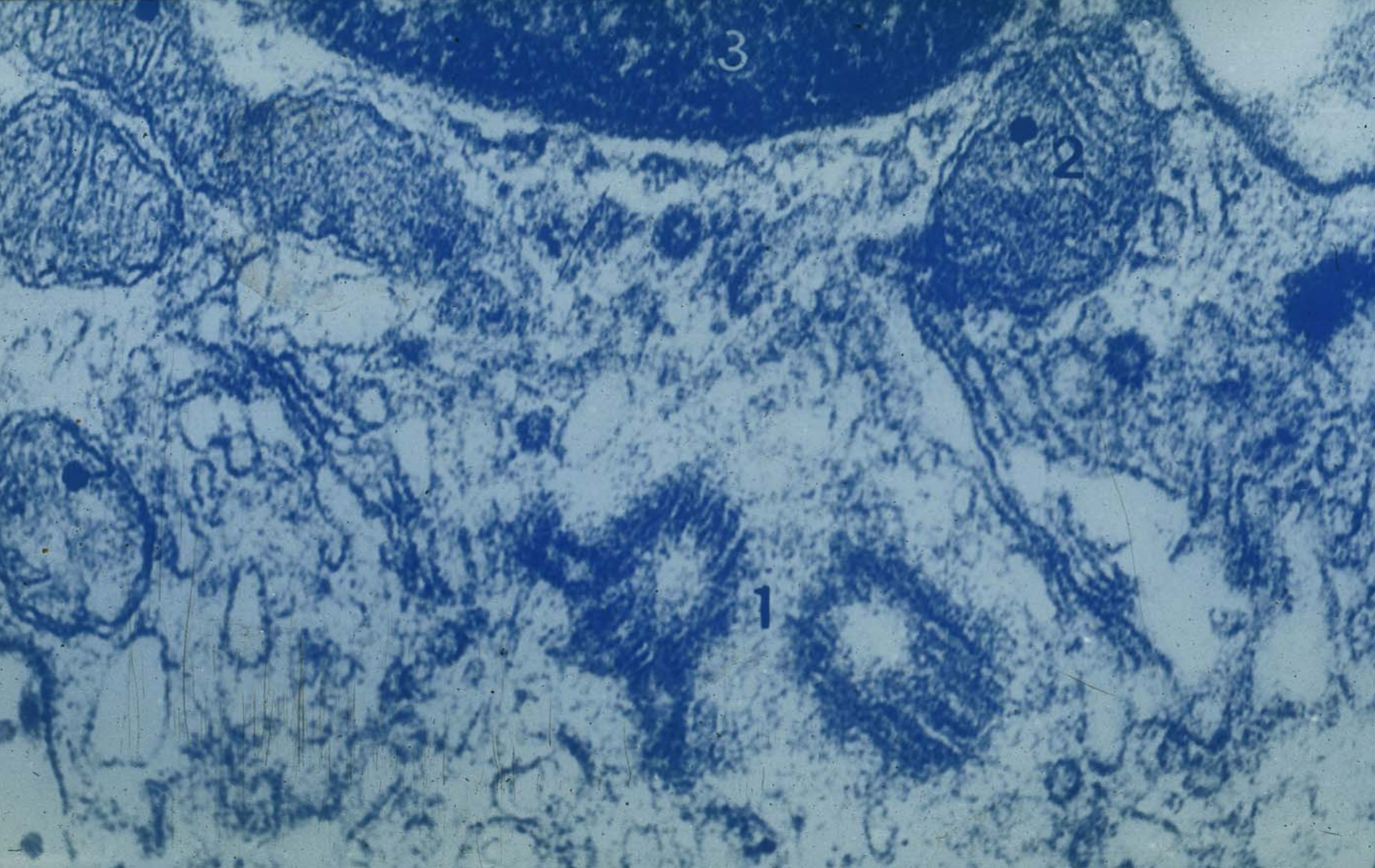
**Lysosome**





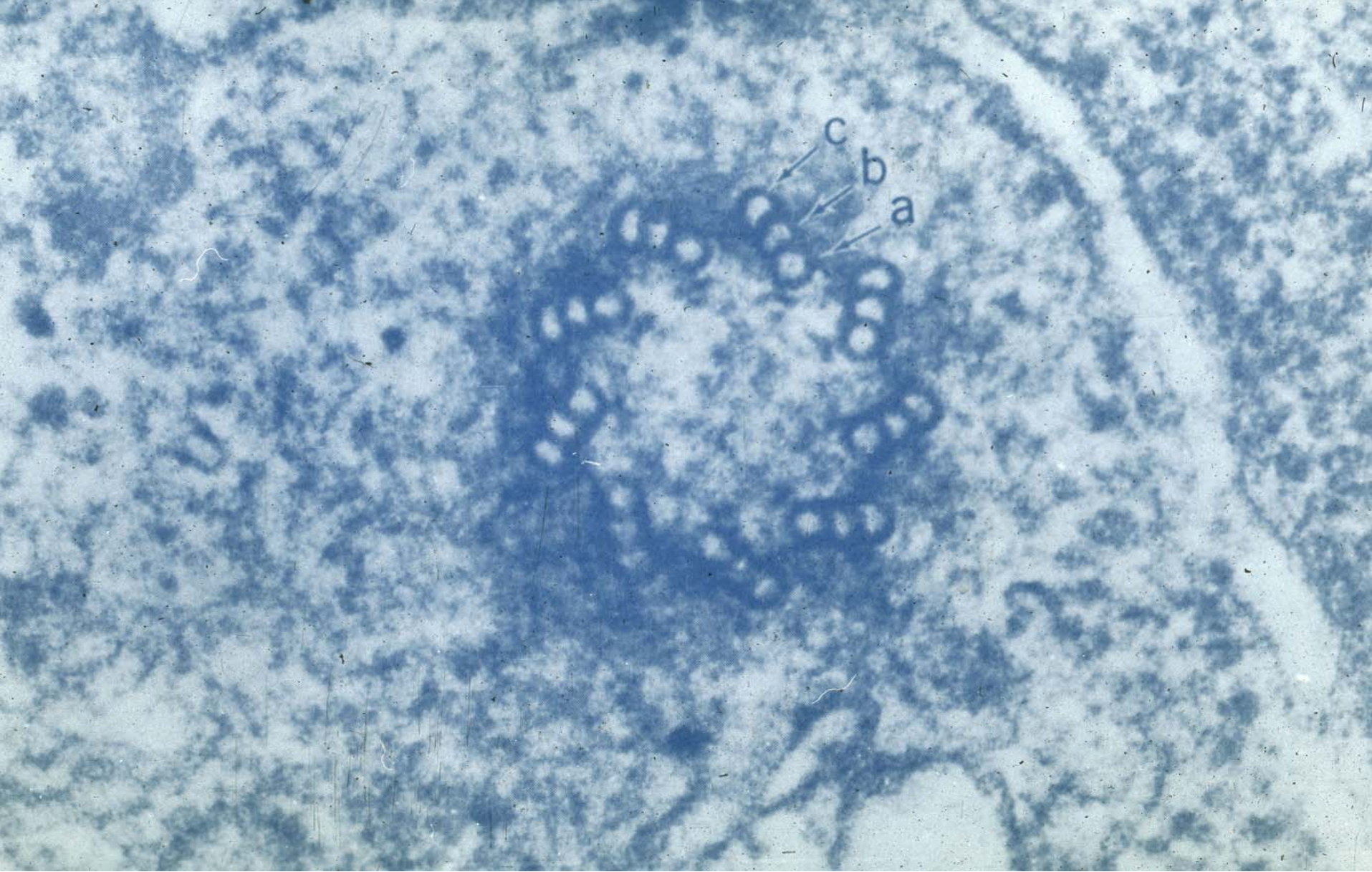
**Microbody**





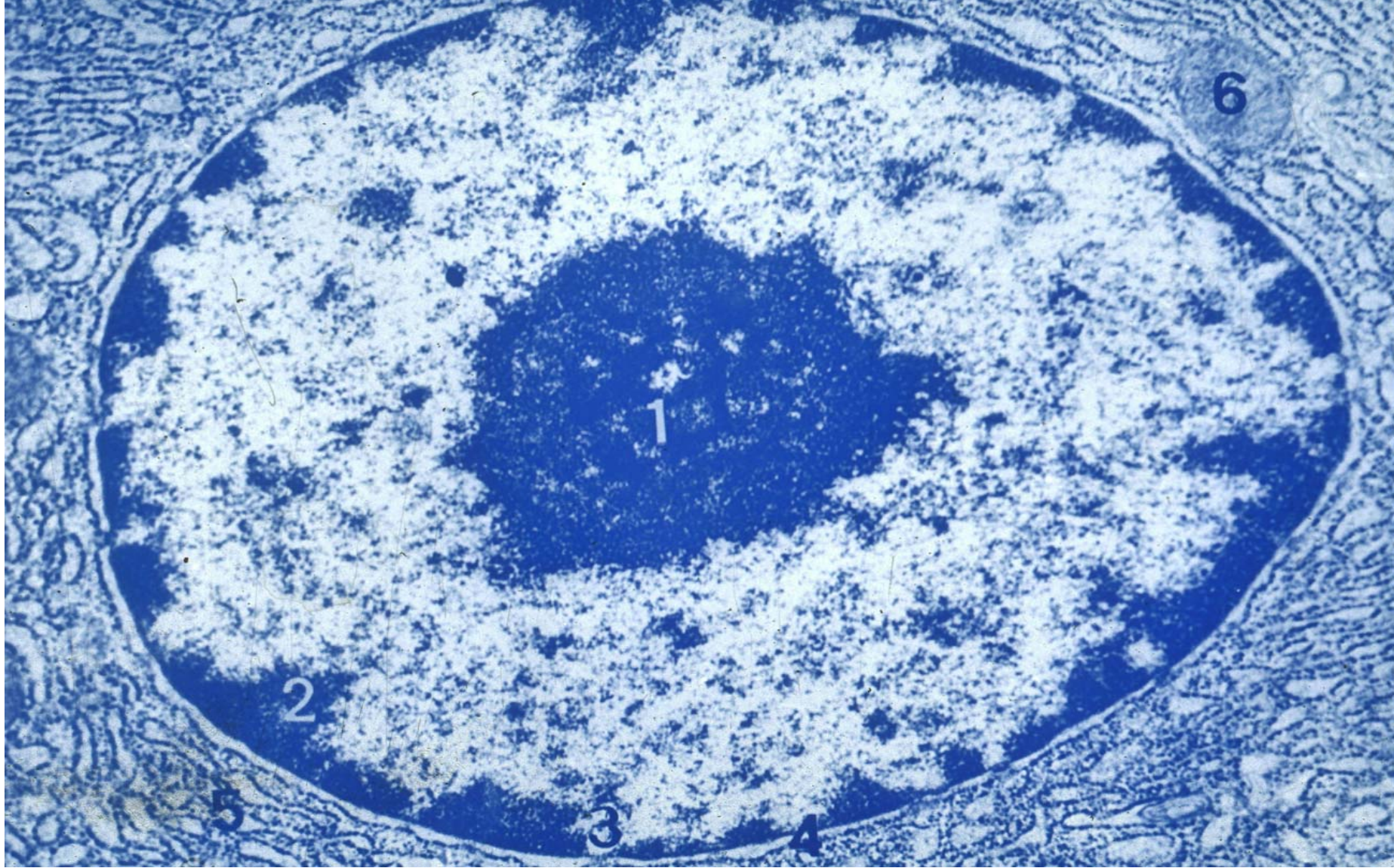
**Centrosome**





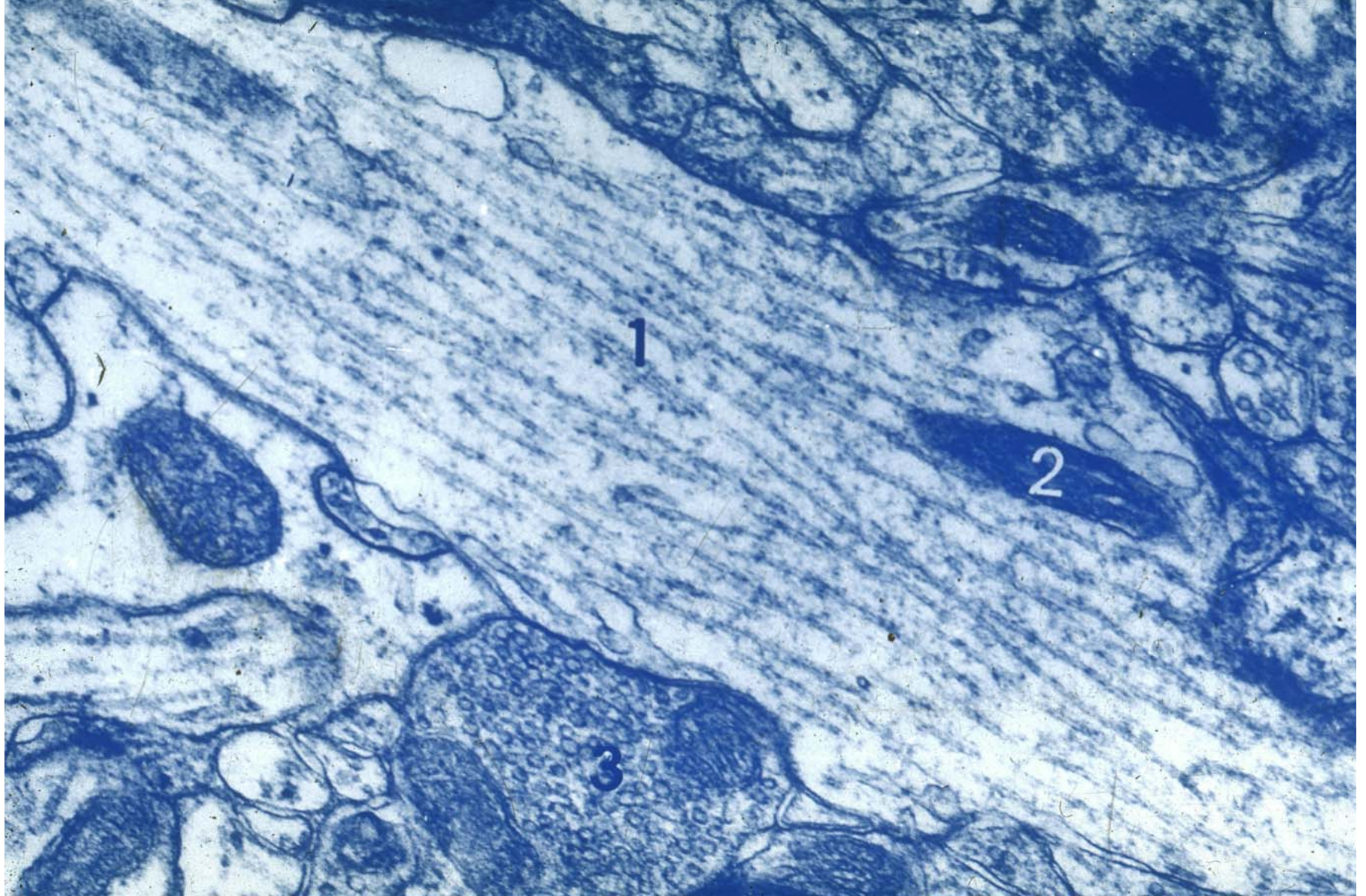
**Centriole**





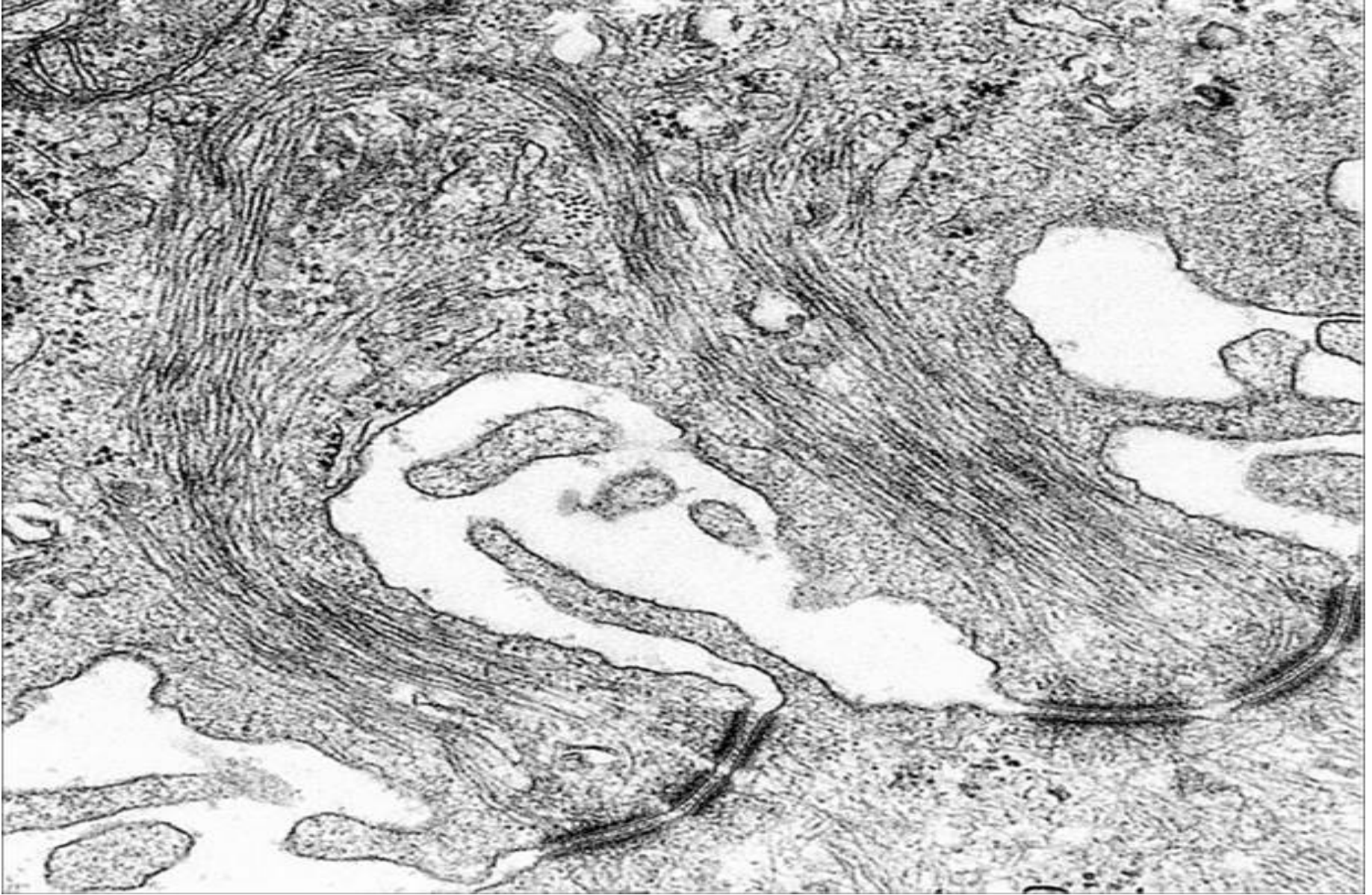
**Nucleus, nucleolus, nuclear lamina, and nuclear pore**



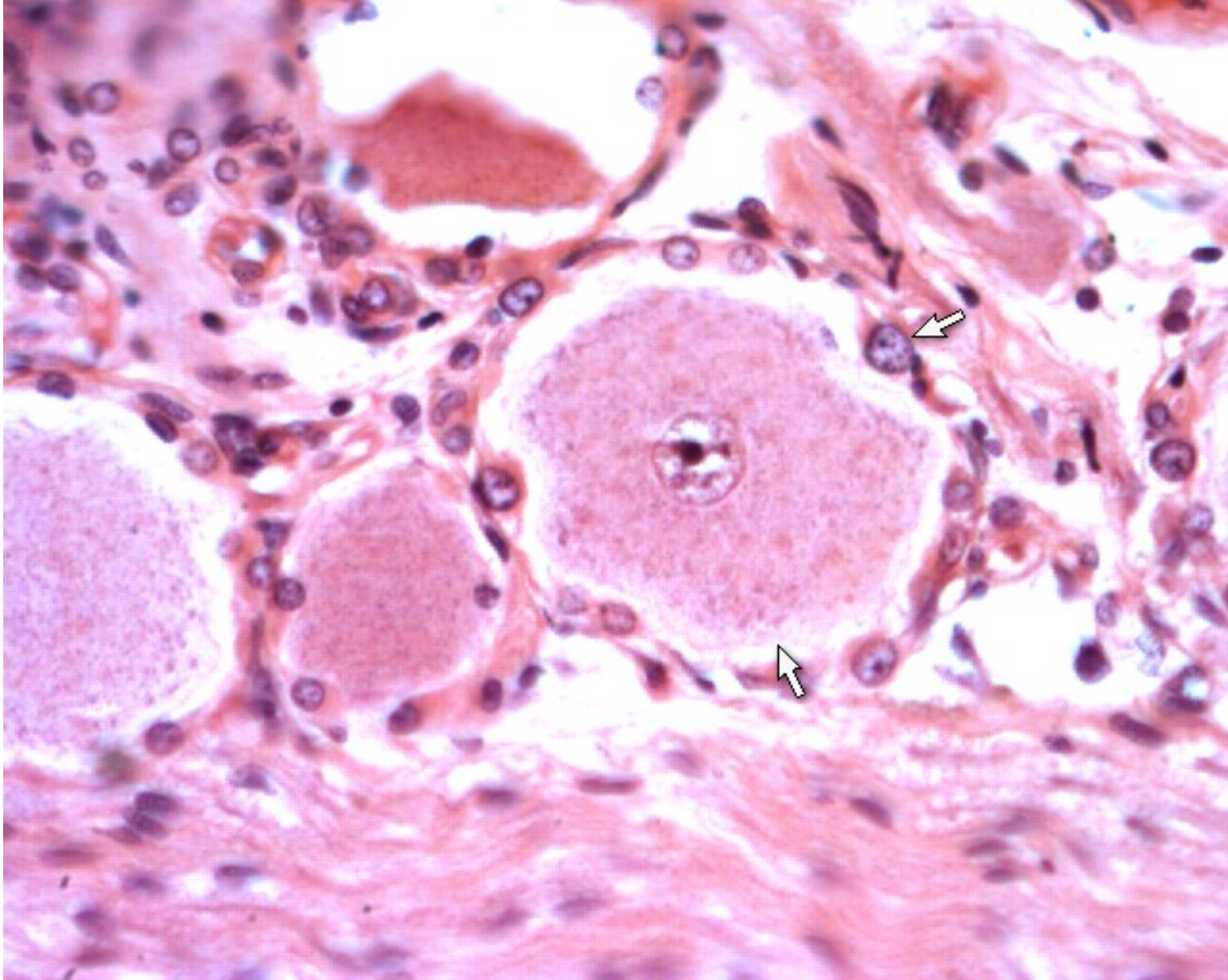


**Microtubule**





**Intermediate filament**



**Spinal ganglion**